

MISSION

Dies and Inserts



Introduction



Our MISSION™ employs customized manufacturing techniques to ensure consistent quality, proper fit, and a longer product life for our line of dies and inserts. These techniques include the use of shaped steel, precision tooling and fixtures, computer-controlled (CNC) equipment, and the valuable experience gained in decades of die and insert specialization. The improved design of MISSION dies and inserts results in improved performance and lower maintenance costs. We engineer and manufacture function and innovation into the conventional die and insert design to make them work better, last longer, and cost less. NOV is the OEM for all CDI and VARCO/BJ dies and inserts.

Broad product offering

We manufacture dies, inserts, and spare parts for use in a wide variety of oilfield handling tools, including:

- Safety clamps
- Drill collar slips
- Casing slips
- Slip-type elevators
- Tubing elevators
- Tubing tongs
- Tubing spiders
- Power tongs
- Iron roughnecks

We manufacture over 5,000 different dies and inserts. Various tooth patterns are available for specific applications. Custom applications are always welcome.

Service

An extensive network of NOV facilities and distributors achieve a global, cost-effective distribution of dies and inserts. Large inventories of MISSION's extensive product line are stocked at most service locations, eliminating the need for individual customer inventories. MISSION is a one-stop shop for all of today's handling tool expendables. As always, the Custom Unconditional Guarantee facilitates a no-risk product trial and ensures complete satisfaction.

* Each of the trademarks and/or trade names referenced above are used solely for the purpose of indicating that NOV provides dies and inserts that are compatible with replacement parts for tools produced under each of the trademarks and/or trade names listed. The trademarks and/or trade names listed above are each owned by their respective owners. For those trademarks and/or trade names owned by third parties, NOV is not affiliated with those third parties or their affiliates and those third parties do not endorse any of the NOV dies and inserts. BAASH ROSS, BJ, HILLMAN-KELLEY, Hydra Rig, KELCO, MISSION, National Oilwell Varco, NOV, the NOV logo, VARCO, WEB WILSON and WOOLLEY are either registered trademarks or trademarks of National Oilwell Varco, L.P. or its affiliates in the United States and/or other countries.

Dies and Inserts

Replacement parts for brands and tools listed below

MISSION Products

Manual tongs	04
BAASH ROSS tools	06
BJ tools	09
Cavins* tools	14
Contour dies	18
Bilco*	18
Farr*	19
Foster*	19
Guiberson*	19
HILLMAN-KELLY tubing and power tongs	21
Hydra Rig bowls and slips	22
KELCO/CDI tubing tongs	23
MISSION slips	23
Peck*	24
Inserts for Orco* bowls and slips	24
Varco	25
Weatherford	28
WOOLLEY	29
RHS Rotary	30
Other dies and inserts	31

Common abbreviations:

- CT Continuous Tooth
- DT Directional Tooth
- FS Fine Straight Tooth
- PT Pyramid Tooth
- ST Straight Tooth, Non Directional
- D Diamond Tooth
- FP Fine Pyramid Tooth
- Blue Diamond is sometimes referred to as Pyramid Tooth
- Coarse Tooth is sometimes referred to as Standard Tooth Pattern

Manual tongs

Coarse tooth dies unless otherwise noted

Die slot (in)	MISSION part number	Varco/BJ part number	Size in inches/description	Place of use	CDI reference number	OEM reference number	Weight per die (lb)	Packed
1 slot	6419011+80	N/A	3/8 x 1 x 1 5/16	BJ type MS and MS backup with slot	CDI-1501SL	6209	0.19	24/box
1 slot	6415024	N/A	3/8 x 1 x 2 1/4	WEB WILSON type E tong	CDI-1502	4216	0.19	24/box
1 slot	6415032	N/A	3/8 x 1 x 2 1/2	Eckel 4 1/2 in. tong, 4 in. and 4 1/2 in. jaw	CDI-1503	85005112	0.25	24/box
1 slot	6415040	N/A	3/8 x 1 x 2 3/4 with slot	BJ CTS 4 1/2 in., 5 in., and 5 1/2 in. tongs	CDI-1504	30869	0.13	24/box
1 slot	6400019	N/A	3/8 x 1 x 3 3/8	BJ Powermatic tong, FARR power tong Weatherford 5 1/2 in. and 7 3/8 in. tong	CDI-1505	6473	0.38	24/box
1 slot	6415067	N/A	3/8 x 1 x 1 7/16 with slot	BJ Powermatic and Hydratorc tong w/1 in. die slot (48 in. -4 1/2 in.)	CDI-1506	24554-2	0.19	24/box
1 slot	6415075	N/A	3/8 x 1 x 1 7/16 with slot	4 1/2 in. Contour for CTS tong	CDI-1507	31175	0.19	24/box
1 slot	6400027	N/A	3/8 x 1 x 4 1/4	WEB WILSON type C, D, and ADFF tongs BJ	CDI-1508	4316 12612-1	0.38	24/box
1 slot	6415091	N/A	3/8 x 1 x 4 1/2	Hillman-Kelley backup die	CDI-1509	8500-5113	0.44	24/box
1 slot	6400035	N/A	3/8 x 1 x 5 3/4	WEB WILSON type B and Old Style AAX BJ B+V "BV-37"	CDI-1510	4516 12512	0.50	24/box
3/8 slot	6400086	N/A	3/8 x 3/8 x 1.937	BJ type S and WS tongs Eckel 4 1/2 in. tong, 2 1/16 in. Jaw	CDI-4009	6472 101-257	0.10	24/box
3/8 slot	6440010	N/A	3/8 x 3/8 x 4 1/2	Hillman-Kelley standard All sizes drill pipe and casing power tongs	CDI-4001	8500-5565	0.24	24/box
1 1/4 slot	6416012	N/A	1/2 x 1 1/4 x 3 3/8	BJ drill pipe power tong Eckel 5 1/2 in. to 30 in. power tongs Farr power tongs	CDI-1601	24768-2 101-251 337-02-098	0.55	12/box
1 1/4 slot	6416020	16401-2	1/2 x 1 1/4 x 5	BJ types SDD, C, F and LF tong BJ power casing tong (4 1/2 to 13 3/8) WOOLLEY type super C, SLF and SDD tong	CDI-1602	16401-2 627-185-1500	0.75	12/box
1 1/4 slot	6416187*		1/2 x 1 1/4 x 5 pyramid	Eckel model 850 WEB WILSON "B+V" "BV-25", "BV-35", "BV-100"	CDI-1618	103426 4616	0.75	12/box
1 1/4 slot	6416039	16402-2	1/2 x 1 1/4 x 5 7/8	BJ type B and DB tongs WEB WILSON types AAX, H and AAX-ST-160 WOOLLEY type super A	CDI-1603	16402-2 4716 627-185-1578	0.84	12/box
1 1/4 slot	6416195*		1/2 x 1 1/4 x 5 7/8 pyramid	Super B rotary and super B casing tongs B+V "BV-55", "BV-57", "BV-65", "BV-80"	CDI-1619		0.84	12/box

Diamond tooth dies

Die slot (in)	MISSION part number	Size in inches/description	Place of use	Varco part number	Weight per die (lb)	Packed
1	6419020	3/8 x 1 x 3 3/8	Same as 6400019 above	N/A	0.38	12/box
1	6419062	3/8 x 1 x 5 3/4	Same as 6400035 above	N/A	0.50	12/box
3/8	6440428	3/8 x 3/8 x 4 1/2	Same as 6440010 above	N/A	0.24	12/box
1 1/4	6419518	1/2 x 1 1/4 x 3 3/8	Same as 6416012 above	N/A	0.55	12/box
1 1/4	6419577	1/2 x 1 1/4 x 5	Same as 6416020 above	16401-6	0.75	12/box
1 1/4	6419666	1/2 x 1 1/4 x 5 7/8	Same as 6416039 above	16402-6	0.84	12/box

Pyramid tooth dies

Die slot (in)	MISSION part number	Size in inches/description	CDI reference number	Weight per die (lb)	Packed
1	6400072	3/8 x 1 x 6 3/8	CDI-1599	0.50	12/box
1	6400073	3/8 x 1 x 6 3/8	CDI-1597	0.50	12/box
1	6400074	3/8 x 1 x 7 3/8	CDI-1598	0.50	12/box
1	6400075	3/8 x 1 x 7 3/8	CDI-00075	0.50	12/box
1 1/4	6400077+80	1/2 x 1 1/4 x 5 3/8	CDI-00077	0.50	12/box

Manual tongs - reducing dies

Reducing tong dies (1-in. die slot)

NOV part number	Size in inches/description	CDI reference number	Reduction	Weight per die (lb)	Packed
6415113	7/16 x 1 x 3 3/8	CDI-1511	1/8 Reduction	0.40	12/box
6415210	1/2 x 1 x 3 3/8	CDI-1521	1/4 Reduction	0.45	12/box
6415229	1/2 x 1 x 5	CDI-1522	1/4 Reduction	0.50	12/box
6415318	9/16 x 1 x 2 1/2	CDI-1531	3/8 Reduction	0.54	12/box
6415326	9/16 x 1 x 3 3/8	CDI-1532	3/8 Reduction	0.48	12/box
6415415	3/4 x 1 x 3 3/8	CDI-1541	1/2 Reduction	0.50	12/box
6415423	1 1/8 x 1 x 3 3/8	CDI-1542	3/8 Reduction	0.55	12/box
6415431	3/4 x 1 x 3 3/8	CDI-1543	3/8 Reduction	0.60	12/box
6415466	1 x 1 x 3 3/8	CDI-1546	1 Reduction	0.70	12/box

Reducing tong dies (1/4-in. die slot; 2 1/2-in. long)

6416110	7/16 x 1 1/4 x 2 1/2	CDI-1611	Standard	0.38	12/box
6416209	1/2 x 1 1/4 x 2 1/2	CDI-1612	1/8 Reduction	0.40	12/box
6416217	9/16 x 1 1/4 x 2 1/2	CDI-1621	1/4 Reduction	0.41	12/box
6416314	3/8 x 1 1/4 x 2 1/2	CDI-1631	3/8 Reduction	0.45	12/box
6416411	1 1/8 x 1 1/4 x 2 1/2	CDI-1641	1/2 Reduction	0.49	12/box

Reducing tong dies (1/4-in. die slot; 3 3/8-in. long)

6416128	7/16 x 1 1/4 x 3 3/8	CDI-1612	1/8 Undersize	0.50	12/box
6416225	9/16 x 1 1/4 x 3 3/8	CDI-1622	1/8 Reduction	0.63	12/box
6416322	3/8 x 1 1/4 x 3 3/8	CDI-1632	1/4 Reduction	0.69	12/box
6416420	1 1/8 x 1 1/4 x 3 3/8	CDI-1642	3/8 Reduction	0.77	12/box
6416519	3/4 x 1 1/4 x 3 3/8	CDI-1651	1/2 Reduction	0.83	12/box
6416616	1 3/8 x 1 1/4 x 3 3/8	CDI-1661	3/8 Reduction	0.88	12/box
6416713	7/8 x 1 1/4 x 3 3/8	CDI-1671	3/4 Reduction	0.95	12/box
6416810	1 5/8 x 1 1/4 x 3 3/8	CDI-1681	7/8 Reduction	1.16	12/box
6416918	1 x 1 1/4 x 3 3/8	CDI-1691	1 Reduction	1.25	12/box
6416900	1 1/8 x 1 1/4 x 3 3/8	CDI-1690	1 1/8 Reduction	1.30	12/box

Reducing tong dies (1/4 die slot; 5-in. long)

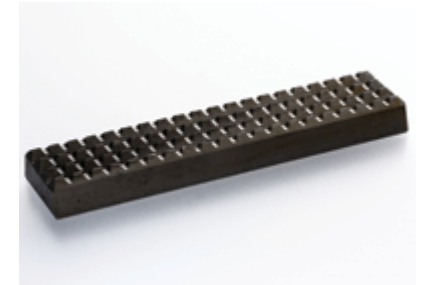
6416233	9/16 x 1 1/4 x 5	CDI-1623	1/8 Reduction	0.77	12/box
6416330	3/8 x 1 1/4 x 5	CDI-1633	1/4 Reduction	0.88	12/box
CDI-1646	1 1/8 x 1 1/4 x 5	CDI-1646	3/8 Reduction	0.96	12/box
6416934	3/4 x 1 1/4 x 5	CDI-1693	1/2 Reduction	1.00	12/box
6416641	1 3/8 x 1 1/4 x 5	CDI-1664	3/8 Reduction	1.12	12/box
6416730	7/8 x 1 1/4 x 5	CDI-1673	3/4 Reduction	1.22	12/box
6416764	1 1/2 x 1 1/4 x 5	CDI-1676	2 Reduction	2.43	12/box
6416829	1 5/8 x 1 1/4 x 5	CDI-1682	7/8 Reduction	1.31	12/box
6416841	1 7/8 x 1 1/4 x 5	CDI-1684	1 1/4 Reduction	1.57	12/box
6416977	1 x 1 1/4 x 5	CDI-1697	1 Reduction	1.37	12/box

Reducing tong dies (1/4-in. die slot; 5 7/8-in. long)

6416926	1 x 1 1/4 x 5 7/8	CDI-1692	1 Reduction	1.69	12/box
6416241	9/16 x 1 1/4 x 5 7/8	CDI-1624	1/8 Reduction	0.91	12/box
6416446	1 1/8 x 1 1/4 x 5 7/8	CDI-1644	3/8 Reduction	1.12	12/box
6416497	3/4 x 1 1/4 x 5 7/8	CDI-1649	1/2 Reduction	1.23	12/box
6416624	1 3/8 x 1 1/4 x 5 7/8	CDI-1662	3/8 Reduction	1.32	12/box
6416721	7/8 x 1 1/4 x 5 7/8	CDI-1672	3/4 Reduction	1.41	12/box
6416802	1 3/8 x 1 1/4 x 5 7/8	CDI-1680	1 3/8 Reduction	1.52	12/box
6416942	3/8 x 1 1/4 x 5 7/8	CDI-1694	1/4 Reduction	1.03	12/box

Reducing tong dies (3/8-in. die slot)

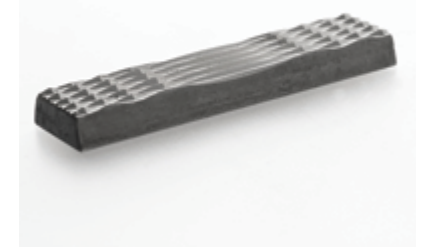
6440010	3/8 x 3/8 x 4 1/2	CDI-4001	Standard	0.24	24/box
6440029	3/16 x 3/8 x 4 1/2	CDI-4002	1/8 Undersize	0.20	24/box
6440061	1 1/32 x 3/8 x 4 1/2	CDI-4003	3/16 Reduction	0.34	24/box
6440045	3/8 x 3/8 x 4 1/2	CDI-4004	1/2 Reduction	0.40	24/box
6440053	1 1/8 x 3/8 x 4 1/2	CDI-4005	3/8 Reduction	0.43	24/box



Pyramid tooth tong die | 6416187



Coarse tooth tong die | 6416020



Diamond tooth tong die | 6419577

*B+V (Blohm + Voss) is a trademark of Blohm Voss Oil Tools LLC. NOV is not affiliated with Blohm Voss Oil Tools LLC, or its affiliates and Blohm Voss Oil Tools LLC, does not endorse any NOV products.

BAASH ROSS tools - slip and spider inserts

Inserts for CDI or BAASH ROSS C-1 drill collar slips

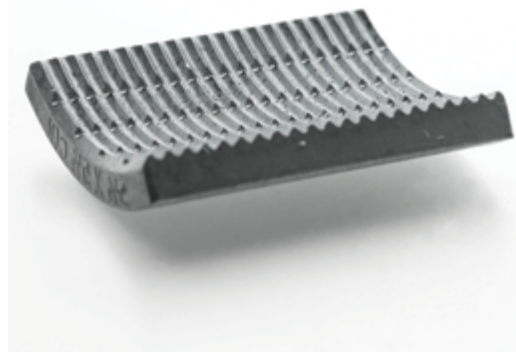
NOV part number	Size in inches/description	CDI reference number	Reference number	Number per set	Weight per insert (lb)
6437044	3 to 4¼	CDI-3704	7638-A-116	8	1.00
6437044	4¼ to 5¾	CDI-3704	7638-A-116	10	1.00
6437044	5½ to 7	CDI-3704	7638-A-116	12	1.00
6437044	6¾ to 8¾	CDI-3704	7638-A-116	12	1.00
6437044	8½ to 10	CDI-3704	7638-A-116	12	1.00
6437044	10 to 11¼	CDI-3704	7638-A-116	17	1.00
6437044	11¼ to 12¾	CDI-3704	7638-A-116	19	1.00



BAASH ROSS insert for C-1 | 6437044

Inserts for CDI or BAASH ROSS 3½ -in. TS-100 tubing spider

NOV part number	Size in inches/description	CDI reference number	Reference number	Number per set	Weight per insert (lb)
6430082	3½ x 3½	CDI-3008	7502-A-5069	9	1.25
6430112	3½ x 3¾	CDI-3011	N/A	9	1.29
6430120	3½ x 3¾	CDI-3012	N/A	9	1.33
6430090	3½ x 3¾	CDI-3009	N/A	9	1.37
6430104	3½ x 3	CDI-3010	N/A	9	1.40
6430074	3½ x 2½	CDI-3007	7502-A-5070	9	1.50
6430066	3½ x 2¾	CDI-3006	7502-A-5071	9	1.75
6430058	3½ x 2½	CDI-3005	7502-A-5072	9	2.00
6430139	3½ x 2	CDI-3013	N/A	9	2.10
6430040	3½ x 1½	CDI-3004	7502-A-5074	9	2.25
6430031	3½ x 1¼	CDI-3003	7502-A-5075	9	2.50
6430023	3½ x 1	CDI-3002	7502-A-5076	9	2.75
6430015	3½ x ¾	CDI-3001	7502-A-5077	9	3.00



BAASH ROSS insert for TS-100 | 6430708

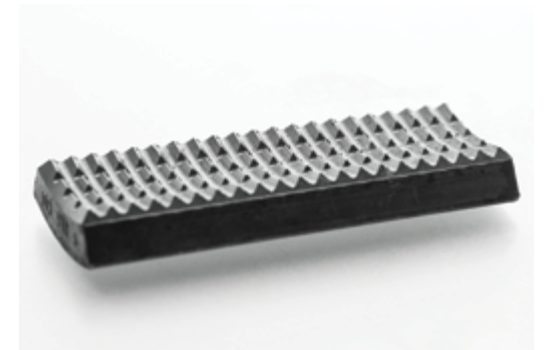
Inserts for CDI 5½ -in. TS-100 tubing spider

NOV part number	Size in inches/description	CDI reference number	Reference number	Number per set	Weight per insert (lb)
6430708	5½ x 5½	CDI-3070	N/A	6	1.63
6430716	5½ x 5¾	CDI-3071	N/A	6	1.88
6430724	5½ x 5¾	CDI-3072	N/A	6	2.06
6430732	5½ x 5¾	CDI-3073	N/A	6	2.31
6430740	5½ x 5	CDI-3074	N/A	6	2.44
6430759	5½ x 4¾	CDI-3075	N/A	6	2.75
6430767	5½ x 4¾	CDI-3076	N/A	6	2.94
6430775	5½ x 4¾	CDI-3077	N/A	6	3.19
6430783	5½ x 4½	CDI-3078	N/A	6	3.19
6430791	5½ x 4¾	CDI-3079	N/A	6	3.50
6430805	5½ x 4¾	CDI-3080	N/A	6	3.69
6430813	5½ x 4¾	CDI-3081	N/A	6	3.88
6430821	5½ x 4	CDI-3082	N/A	6	4.00
6430830	5½ x 3¾	CDI-3083	N/A	6	4.19
6430848	5½ x 3¾	CDI-3084	N/A	6	4.31
6430856	5½ x 3¾	CDI-3085	N/A	6	4.50
6430864	5½ x 3½	CDI-3086	N/A	6	4.56
6430872	5½ x 3¾	CDI-3087	N/A	6	4.75
6430880	5½ x 3¼	CDI-3088	N/A	6	4.88
6430899	5½ x 3¾	CDI-3089	N/A	6	5.00
6430902	5½ x 3	CDI-3090	N/A	6	5.13
6430910	5½ x 2¾	CDI-3091	N/A	6	5.31

BAASH ROSS tools - slip inserts

Inserts for CDI or BAASH ROSS D.U. rotary slip (4½-in. body)

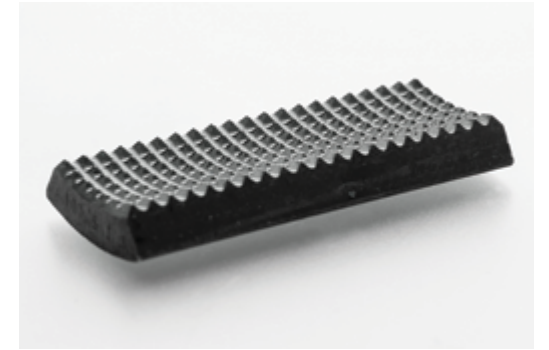
NOV part number	Size in inches/description	CDI reference number	Reference number	Number per set	Weight per insert (lb)
6434061	4½ x 4½	CDI-3406	7613-A-81	24/18	0.75
6434053	4½ x 4	CDI-3405	7613-FF-81	24/18	1.00
6434045	4½ x 3½	CDI-3404	7613-C-82	24/18	1.50
6434037	4½ x 2¾	CDI-3403	7613-B-82	24/18	2.00
6434029	4½ x 2¾	CDI-3402	7613-A-82	24/18	2.25
6434010	4½ x 2½	CDI-3401	7613-M-82	24/18	2.50
6434371	4½ x 1.900	CDI-3418	N/A	24/18	2.70
6434312	4½ x 4½CT	CDI-3406CT	7613-H-81	24/18	0.75
6434304	4½ x 4CT	CDI-3405CT	7613-G-81	24/18	1.00
6434274	4½ x 3½CT	CDI-3404CT	7613-E-81	24/18	1.50
6434258	4½ x 2¾CT	CDI-3403CT	N/A	24/18	2.00
6434363	4½ x 3CT	CDI-3416CT	7613-E-82	24/18	1.94
6434063	4½ x 4½PT	CDI-3406PT	N/A	24/18	



Continuous tooth | 6434312

Inserts for BAASH ROSS D.U. rotary slip (5½-in. body)

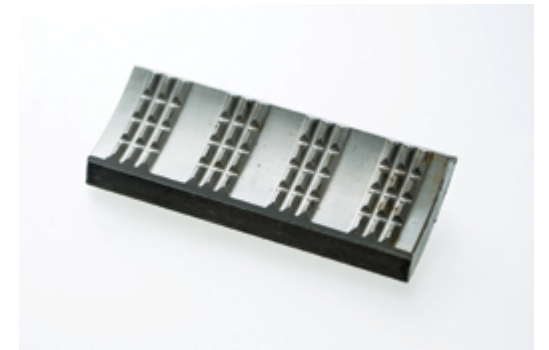
NOV part number	Size in inches/description	CDI reference number	Reference number	Number per set	Weight per insert (lb)
6435017	5½ x 5½	CDI-3501	7613-H-81	24/18	1.00
6435025	5½ x 5	CDI-3502	7613-G-81	24/18	1.50
6435041	5½ x 4½	CDI-3504	7613-E-81	24/18	2.00
6435238	5½ x 4	CDI-3506	N/A	24/18	2.50
6435076	5½ x 3½	CDI-3507	7613-E-82	24/18	2.90
6435254	5½ x 2¾	CDI-3508	N/A	24/18	3.40
6435181	5½ x 5½CT	CDI-3501CT	N/A	24/18	1.00
6435190	5½ x 5CT	CDI-3502CT	N/A	24/18	1.50
6435203	5½ x 4¾CT	CDI-3503CT	N/A	24/18	2.06
6435211	5½ x 4½CT	CDI-3504CT	N/A	24/18	2.29
6435220	5½ x 4¾CT	CDI-3505CT	N/A	24/18	2.51
6435238	5½ x 4CT	CDI-3506CT	N/A	24/18	2.72
6435246	5½ x 3½CT	CDI-3507CT	N/A	24/18	3.09
6435254	5½ x 2¾CT	CDI-3508CT	N/A	24/18	3.49



Pyramid tooth | 6434063

Inserts for BAASH ROSS D.U. rotary slip (7-in. body)

NOV part number	Size in inches/description	CDI reference number	Reference number	Number per set	Weight per insert (lb)
6436013	7 x 7	CDI-3601	7613-EE-81	24/18	1.25
6436021	7 x 6¾	CDI-3602	7613-DD-81	24/18	1.75
6436048	7 x 5½	CDI-3604	7613-Z-81	24/18	3.12
6436056	7 x 5	CDI-3605	N/A	24/18	4.00
6436030	7 X 6	CDI-3603	N/A	24/18	5.00
6436109	7 X 5¾	CDI-3610	N/A	24/18	2.65
6436099	7 x 7CT	CDI-3601CT	N/A	24/18	1.25

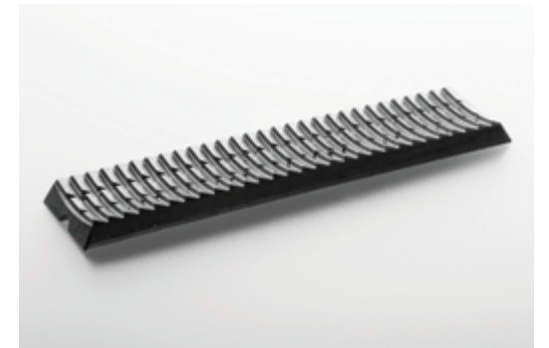


Standard tooth | 6434061

Inserts for CDI or BAASH ROSS UC-3 and UC-4 casing slip

NOV part number	Size in inches/description	CDI reference number	Reference number	Number per set	Weight per insert (lb)
6431127	8¾ x 8¾	CDI-3112	7704-A-22	10	2.00
6431135	8¾ x 7¾	CDI-3113	7704-A-113	10	5.00
6431143	8¾ x 7	CDI-3114	7704-A-112	10	6.00
6431151	10¾ x 10¾	CDI-3115	7704-A-8	10	3.00
6431168	10¾ x 9¾	CDI-3116	7704-A-9	10	7.00
6431178	10¾ x 9	CDI-3117	7704-A-125	10	8.40
6431186	13¾ x 13¾	CDI-3118	7704-A-38	12	3.50
6431194	13¾ x 12¾	CDI-3119	7704-A-92	12	9.00
6431208	13¾ x 11¾	CDI-3120	7704-A-39	12	10.20
6431216	16 x 16	CDI-3121	7704-A-45	14	4.00
6431224	20 x 20	CDI-3122	7704-A-99	17	3.50
6431224	24 x 24	CDI-3122	7704-A-99	19	3.80
6431232	20 x 18¾	CDI-3123	7704-A-5000	17	6.00
6431224	26 X 26	CDI-3122	7704-A-100	21	3.80

*Straight tooth is available



UC insert | 6431127

Replacement parts for BJ tools - spider inserts

Inserts for BJ 50 ton spider (3½-in. slip)

NOV part number	Varco/BJ part number	Size in inches/description	OEM reference number	CDI reference number	Number per set	Weight per insert (lb)
6478034	6424774	3½ x 3½DT	24774	CDI-7803	12	1.00
6478042	6430358	3½ X 2½DT	30358	CDI-7804	12	1.00
6478069	N/A	3½ X 2½DT	N/A	CDI-7806	24	0.80

Inserts for BJ 50 ton spider (2⅞-in. slip)

NOV part number	Description in inches	OEM reference number	CDI reference number	Number per set	Weight per insert (lb)
6476074	2⅞ x 2⅞ST	24773	CDI-7607	6	0.81
6476066	2⅞ x 2⅞ST	29255	CDI-7606	6	1.00
6476058	2⅞ X 2⅞ST	29256	CDI-7605	6	1.13
6476082	2⅞ x 2ST	29351	CDI-7608	6	1.20
6476040	2⅞ x 1½ (1.90 is pipe OD)ST	29257	CDI-7604	6	1.25
6476031	2⅞ x 1¼ (1.66 is pipe OD)ST	29258	CDI-7603	6	1.38
6476023	2⅞ x 1 (1.315 is pipe OD)ST	29259	CDI-7602	6	1.38
6476015	2⅞ x ¾ (1.05 is pipe OD)ST	N/A	CDI-7601	6	1.50

Inserts for BJ 100 ton spider (3½-in. slip)

NOV part number	Varco/BJ part number	Size in inches/description	OEM reference number	CDI reference number	Number per set	Weight per insert (lb)
6478034	6424774	3½ x 3½DT	24774	CDI-7803	18	0.44
6478042	6430358	3½ x 2½DT	30358	CDI-7804	18	0.69

Inserts for BJ 100 ton spider (2⅞-in. slip)

NOV part number	Size in inches/description	OEM reference number	CDI reference number	Number per set	Weight per insert (lb)
6476074	2⅞ x 2⅞ST	24773	CDI-7607	9	0.81
6476066	2⅞ x 2⅞ST	29255	CDI-7606	9	1.00
6476058	2⅞ x 2⅞ST	29256	CDI-7605	9	1.13
6476082	2⅞ x 2ST	29351	CDI-7608	9	1.20
6476040	2⅞ x 1½ (1.90 is pipe OD)ST	29257	CDI-7604	9	1.25
6476031	2⅞ x 1¼ (1.66 is pipe OD)ST	29258	CDI-7603	9	1.38
6476023	2⅞ x 1 (1.315 is pipe OD)ST	29259	CDI-7602	9	1.38
6476015	2⅞ x ¾ (1.05 is pipe OD)ST	N/A	CDI-7601	9	1.50

*Note: these inserts are available in both straight and directional tooth profiles.



Directional tooth | 6478034



Straight tooth | 6476074

Replacement parts for BJ tools - elevator inserts

Inserts for CDI or BJ “LYT” elevator

NOV part number	Size in inches/description	OEM reference number	CDI reference number	Number per set	Weight per insert (lb)
6474055	2⅞ x 2⅞	28772	CDI-7405	8	0.40
6474063	2⅞ x 2	28722	CDI-7406	8	0.45
6474047	2⅞ x 1½ (1.90)	28775	CDI-7404	8	0.50
6474039	2⅞ x 1¼ (1.66)	28778	CDI-7403	8	0.63
6474020	2⅞ x 1 (1.315)	28749	CDI-7402	8	0.75
6472699	2⅞ x ¾ (1.050)	29370	CDI-7401	8	0.75

*Note: These inserts also fit M&W or B+V 20 ton slip type elevators.

Inserts for CDI or BJ “MYT” elevator

NOV part number	Size in inches/description	OEM reference number	CDI reference number	Number per set	Weight per insert (lb)
6476074	2⅞ x 2⅞	24773	CDI-7607	8	0.75
6476066	2⅞ x 2⅞	29255	CDI-7606	8	1.00
6476058	2⅞ x 2⅞	29256	CDI-7605	8	1.13
6476082	2⅞ x 2	29357	CDI-7608	8	1.20
6476040	2⅞ x 1½ (1.90)	29257	CDI-7604	8	1.25
6476031	2⅞ x 1¼ (1.66)	29258	CDI-7603	8	1.38
6476023	2⅞ x 1 (1.315)	29259	CDI-7602	8	1.38
6476015	2⅞ x ¾ (1.050)	N/A	CDI-7601	8	1.50

*Note These inserts also fit M&W or B+V 20 ton slip type elevators.

Inserts for BJ “YT” elevator (3½-in. body)

NOV part number	Varco/BJ part number	Size in inches/description	OEM reference number	CDI reference number	Number per set	Weight per insert (lb)
6478034	6424774	3½ x 3½	24774	CDI-7803	24	0.44
6478042	6430358	3½ x 2⅞	30358	CDI-7804	24	0.69
6478069	NA	3½ x 2⅞	N/A	CDI-7806	32	0.80

Inserts for CDI or BJ “YT” elevator (2⅞-in. body)

NOV part number	Size in inches/description	OEM reference number	CDI reference number	Number per set	Weight per insert (lb)
6476074	2⅞ x 2⅞	24773	CDI-7607	12	0.81
6476066	2⅞ x 2⅞	29255	CDI-7606	12	1.00
6476058	2⅞ x 2⅞	29256	CDI-7605	12	1.13
6476082	2⅞ x 2	29357	CDI-7608	12	1.20
6476040	2⅞ x 1½ (1.90)	29257	CDI-7604	12	1.25
6476031	2⅞ x 1¼ (1.66)	29258	CDI-7603	12	1.38
6476023	2⅞ x 1 (1.315)	29259	CDI-7602	12	1.38
6476015	2⅞ x ¾ (1.050)	N/A	CDI-7601	12	1.50

*Note: These inserts also fit M&W or B+V 75 ton slip type elevators.

Inserts for BJ “YT” elevator (2⅞-in. body)

6478050	2⅞ x 2⅞	23122	CDI-7805	12	0.65
6478018	2⅞ x 2⅞	26891	CDI-7801	12	0.65



LYT insert | 6474055



MYT insert | 6476040

Replacement parts for BJ tools - elevator inserts

Inserts for BJ "HYT" elevator (3½-in. body)

NOV part number	Varco/BJ part number	Size in inches/description	OEM reference number	CDI reference number	Number per set	Weight per insert (lb)
6478034	6424774	3½ x 3½	24774	CDI-7803	32	1.00
6478042	6430358	3½ x 2¾	30358	CDI-7804	32	1.00
6478069	N/A	3½ x 2¾	N/A	CDI-7806	32	0.80



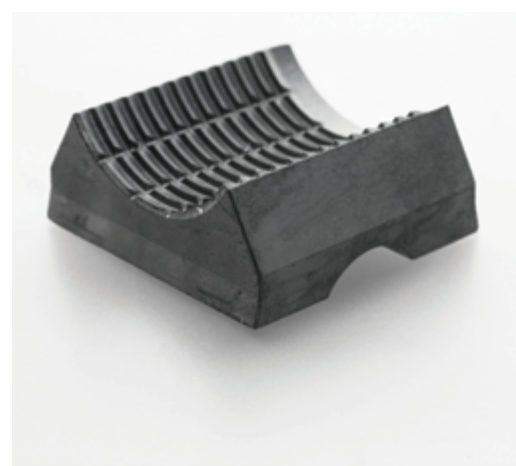
HYT insert | 6478034

Inserts for BJ "HYT" elevators (2¾-in. body)

NOV part number	Size in inches/description	OEM reference number	CDI reference number	Number per set	Weight per insert (lb)
6476074	2¾ x 2¾	24773	CDI-7607	16	0.75
6476066	2¾ x 2¾	29255	CDI-7606	16	1.00
6476058	2¾ x 2¼	29256	CDI-7605	16	1.13

Inserts for BJ "YC" dual elevator (2¾-in. body)

6471510	2¾ x 2¾	27681-1	CDI-7151	4/side	4.00
6471528	2¾ x 2¾	24996	CDI-7152	4/side	4.00
6471536	2¾ x 2¼	24996-1	CDI-7153	4/side	4.00



YC insert | 6471510

Inserts for BJ "HYC" elevator (7⅝-in. body)

NOV part number	Size in inches/description	OEM reference number	CDI reference number	Number per set	Weight per insert (lb)
6471072	7⅝ x 7⅝	70010	CDI-7107	48	0.50

Replacement parts for BJ tools - elevator inserts

Basic type inserts for BJ elevators (YC through 1,000 ton)

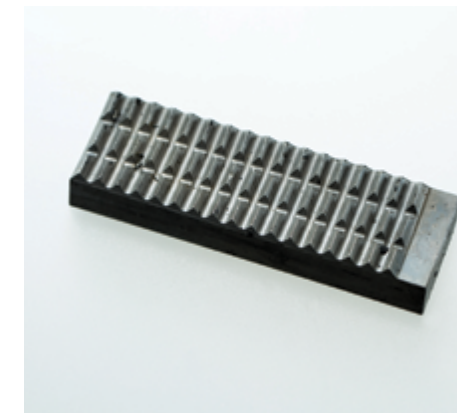
NOV part number	Description	OEM reference number	CDI reference number	Slip size in inches	Pipe size in inches (OD)	Number of inserts required						Weight per insert (oz)	
						YC	HYC	7½ 175 ton	13½ 350 ton	13½ 500 ton	10½ 500 ton		14 1,000 ton
6471030	Basic insert	16441	CDI-7103	3½	3½			18					8
6471056	Basic insert	16442	CDI-7105	4	4	16							8
6471048	Basic insert	16408	CDI-7104	4½	4½	16	24	27					8
6471013	Basic insert	16407	CDI-7103	5½	5½	16	36	27	36	45	45		8
6471013	Basic insert	16407	CDI-7101	7	7	24	48		48	60	60		8
6471013	Basic insert	16407	CDI-7102	7%	7%			45	60	75	75		8
6471021	Basic insert	15660	CDI-7102	8%	8%				60		75		8
6471021	Basic insert	15660	CDI-7102	8%	8%							108	8
6471021	Basic insert	15660	CDI-7102	9%	9%				72	90	90		8
6471021	Basic insert	15660	CDI-7102	10%	10%				72		90		8
6471021	Basic insert	15660	CDI-7102	10%	10%							126	8
6471021	Basic insert	15660	CDI-7102	11%	11%				72	105			8
6471021	Basic insert	15660	CDI-7102	12½	12½							144	8
6471021	Basic insert	15660	CDI-7102	13%	13%				84	135			8
6471021	Basic insert	15660	CDI-7102	14	14							162	8

Reducing inserts for BJ elevators (YC through 1,000 ton)

NOV part number	Description	OEM reference number	CDI reference number	Slip size in inches	Pipe size in inches (OD)	Number of inserts required						Weight per insert (oz)	
						YC	HYC	7½ 175 ton	13½ 350 ton	13½ 500 ton	10½ 500 ton		14 1,000 ton
6472117	Reducing insert	25780	CDI-7211	3½	2¾			18					14
6472125	Reducing insert	24777	CDI-7212	3½	2¾			18					18
6472010	Reducing insert	24781	CDI-7201	4½	4	16	24	27					13
6472028	Reducing insert	24779	CDI-7202	4½	3½	16	24	27					17
6472168	Reducing insert	N/A	CDI-7216	4½	2%			27					21
6472036	Reducing insert	24783	CDI-7203	5½	5	16	36	27	36	45	45		13
6472044	Reducing insert	24785	CDI-7204	7	4½	16		27	36	45	45		17
6472052	Reducing insert	24748	CDI-7205	7	6%	24	48		48	60	60		12
6472079	Reducing insert	25474	CDI-7207	7	6				48	60			17
6472133	Reducing insert	29254	CDI-7213	7%	5¾				48	60	60		18
6472141	Reducing insert	32477	CDI-7214	7%	7¾			45	60	75	75		8
6472060	Reducing insert	26750	CDI-7206	7%	7			45	60	75	75		14
6472079	Reducing insert	25474	CDI-7207	7%	6%				60	75	75		17
6472141	Reducing insert	32477	CDI-7214	8%	8¾				60		75		8
6472150	Reducing insert	34029	CDI-7215	8%	7¾				60		75		15
6472079	Reducing insert	25474	CDI-7207	8%	7%			45	60		75		17
6472214	Reducing insert	39285	CDI-7221	8%	8¾							108	9
6472222	Reducing insert	39286	CDI-7222	8%	8%							108	10
6472230	Reducing insert	39287	CDI-7223	8%	8½							108	11
6472249	Reducing insert	39288	CDI-7224	8%	8¾							108	13
6472095	Reducing insert	32700	CDI-7209	8%	8¾							108	14
6472257	Reducing insert	39289	CDI-7225	8%	8%							108	15
6472150	Reducing insert	34029	CDI-7215	8%	8							108	16
6472079	Reducing insert	25474	CDI-7207	8%	7%							108	17
6472265	Reducing insert	33249	CDI-7226	8%	7¾							108	18
6472273	Reducing insert	39290	CDI-7227	8%	7%							108	19



Directional tooth | 6471013



Straight tooth | 6471951



Straight tooth bevel | 647101STB

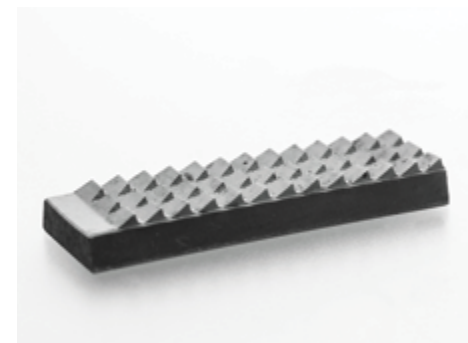
Replacement parts for BJ tools - elevator inserts

*Reducing type inserts for BJ elevators (YC through 1,000 ton), Directional tooth

NOV part number	Description	OEM reference number	CDI reference number	Slip size in inches	Pipe size in inches (OD)	Number of inserts required					Weight per insert (oz)	
						HVC	7% 175 ton	13% 350 ton	13% 500 ton	10% 500 ton		14 1,000 ton
6472141	Reducing insert	32477	CDI-7214	9%	9%			72	90	90		8
6472150	Reducing insert	34029	CDI-7215	9%	8%			72	90	90		16
6472079	Reducing insert	25474	CDI-7207	9%	8 7/8			72	90	90		17
6472150	Reducing insert	34029	CDI-7215	10%	9%			72		90		16
6472265	Reducing insert	33249	CDI-7226	10%	9%			72		90		18
6472214	Reducing insert	39285	CDI-7221	10%	10%						126	9
6472222	Reducing insert	39286	CDI-7222	10%	10%						126	10
6472230	Reducing insert	39287	CDI-7223	10%	10 1/2						126	11
6472249	Reducing insert	39288	CDI-7224	10%	10%						126	13
6472095	Reducing insert	32700	CDI-7209	10%	10%						126	14
6472257	Reducing insert	39289	CDI-7225	10%	10%						126	15
6472150	Reducing insert	34029	CDI-7215	10%	10						126	16
6472079	Reducing insert	25474	CDI-7207	10%	9%						126	17
6472265	Reducing insert	33249	CDI-7226	10%	9%						126	18
6472273	Reducing insert	39290	CDI-7227	10%	9%						126	19
6472150	Reducing insert	34029	CDI-7215	11%	10%		72	105			126	16
6472079	Reducing insert	25474	CDI-7207	11%	10%		72	105				17
6472214	Reducing insert	39285	CDI-7221	12 1/2	12%						144	9
6472222	Reducing insert	39286	CDI-7222	12 1/2	12%						144	10
6472230	Reducing insert	39287	CDI-7223	12 1/2	12%						144	11
6472249	Reducing insert	39288	CDI-7224	12 1/2	12						144	13
6472095	Reducing insert	32700	CDI-7209	12 1/2	11%						144	14
6472257	Reducing insert	39289	CDI-7215	12 1/2	11%						144	15
6472150	Reducing insert	34029	CDI-7207	12 1/2	11%						144	16
6472079	Reducing insert	25474	CDI-7226	12 1/2	11 1/2						144	17
6472265	Reducing insert	33249	CDI-7226	12 1/2	11%						144	18
6472273	Reducing insert	39290	CDI-7214	12 1/2	11 1/4						144	19
6472141	Reducing insert	32477	CDI-7215	12%	12%							8
6472150	Reducing insert	34029	CDI-7207	12%	11%							16
6472079	Reducing insert	25474	CDI-7214	12%	11%							17
6472141	Reducing insert	32477	CDI-7209	13%	13 1/2		84	135				16
6472095	Reducing insert	32700	CDI-7215	13%	12%		84	135				14
6472150	Reducing insert	34029	CDI-7221	13%	12 1/2		84	135				16
6472214	Reducing insert	39285	CDI-7222	14	13%						162	9
6472222	Reducing insert	39286	CDI-7223	14	13%						162	10
6472230	Reducing insert	39287	CDI-7224	14	13%						162	11
6472249	Reducing insert	39288	CDI-7209	14	13 1/2						162	13
6472095	Reducing insert	32700	CDI-7209	14	13%						162	14
6472257	Reducing insert	39289	CDI-7215	14	13%						162	15
6472150	Reducing insert	34029	CDI-7207	14	13%						162	16
6472079	Reducing insert	25474	CDI-7226	14	13						162	17
6472265	Reducing insert	33249	CDI-7226	14	12%						162	18
6472273	Reducing insert	39290	CDI-7227	14	12%						162	19
6472729	Reducing insert	32561	CDI-7231	20	18%	108						24
6472702	Reducing insert	1/2 len	CDI-7231	20	18%	36						12

These inserts also fit Blohm + Voss slip type casing elevators and new deal casing spiders.

*Blohm + Voss is a trademark of Blohm Voss Oil Tools LLC. NOV is not affiliated with Blohm Voss Oil Tools LLC. or its affiliates and Blohm Voss Oil Tools LLC. does not endorse any NOV products.



Directional tooth | 6472141



Straight tooth | 6472753



Fine straight tooth | 6471854

Replacement parts for BJ tools - dies

Curved faced dies for BJ Powermatic and Hydratorc tongs

NOV part number	Size in inches/description	OEM reference number	CDI reference number	Weight per die (lb)
6470017	2% Directional tooth	27498-1	CDI-7001	1.00
6470025	2% Directional tooth	27494-1	CDI-7002	1.00
6470114	2% Straight tooth	N/A	CDI-7011	1.00
6470980	2% Fine tooth	N/A	CDI-7011FS	1.00
6470122	2% Straight tooth	N/A	CDI-7012	1.00
6470955	2% Fine tooth	N/A	CDI-7012FS	1.00
6470211	1.660	29313	CDI-7021	1.00
6470220	1.900	29312	CDI-7022	1.00
6470238	2 and 2 1/8	29311	CDI-7023	1.00

*Note: These dies are machined, not cast.

Reducing curved faced dies for BJ Powermatic and Hydratorc tongs

6470947	2% x 2 3/8	N/A	CDI-7071	1.50
6470726	2% x 2 1/8	N/A	CDI-7072	1.80
6470734	2% x 1 1/2 (1.90)	N/A	CDI-7073	1.88
6470742	2% x 1 1/4 (1.660)	N/A	CDI-7074	2.13
6470750	2% x 1 (1.315)	N/A	CDI-7075	2.25
6470319	2% x 2 1/8	N/A	CDI-7031	1.37
6470327	2% x 1 1/2 (1.90)	N/A	CDI-7032	1.50
6470335	2% x 1 1/4 (1.660)	N/A	CDI-7033	1.68
6470343	2% x 1 (1.315)	N/A	CDI-7034	1.94

*Note: These dies are machined, not cast.



Directional tooth (basic) | 6470017



Directional tooth (reducer) | 6470947

Replacement parts for Cavins tools - Cavins tools inserts and buttons

Chevron inserts for Cavins type B slip

NOV part number	Size in inches/description	OEM reference number	CDI reference number	Number per set	Weight per set (lb)
6491103	3½	TB-160-3½	CDI-9110	12 (6R&6L)	3.36
6491111	2½	TB-160-2½	CDI-9111	12 (6R&6L)	3.36
6491120	2¾	TB-160-2¾	CDI-9112	12 (6R&6L)	3.36

Note: These inserts are machined, not cast.

Chevron inserts for Cavins type C slip

6490107	3½	TC-160-3½	CDI-9010	12 (6R&6L)	3.72
6490115	2¾	TC-160-2¾	CDI-9011	12 (6R&6L)	3.72
6490123	2¾	TC-160-2¾	CDI-9012	12 (6R&6L)	3.72

Note: These inserts are machined, not cast.

Chevron reducing inserts for Cavins type B slip

6491200	2¾ x 2¾	N/A	CDI-9120	12 (6R&6L)	7.44
---------	---------	-----	----------	------------	------

Note: These inserts are machined, not cast.

Chevron reducing inserts for Cavins type C slip

6490204	2¾ x 2¾	N/A	CDI-9020	12 (6R&6L)	7.44
---------	---------	-----	----------	------------	------

Note: These inserts are machined, not cast.

Circular buttons for Cavins type B slip

NOV part number	Size in inches/description	CDI reference number	Number per set	Weight per each (lb)
6490891	2¾ button	CDI-9089	24	0.11
6490905	2¾ button	CDI-9090	24	0.11
6490913	3½ button	CDI-9091	24	0.13

Note: These inserts are machined, not cast.

Circular buttons for Cavins type C slip

6490891	2¾ button	CDI-9089	28	0.11
6490905	2¾ button	CDI-9090	28	0.11
6490913	3½ button	CDI-9091	28	0.13
6490921	4½ button	CDI-9092	56	0.13

Note: These inserts are machined, not cast.

Replacement parts for Cavins tools - slip inserts and parts

*Full circle inserts for Cavins type B slip

NOV part number	Size in inches/description	OEM reference number	CDI reference number	Number per set	Weight per set (lb)
6491014	2¾ x 2¾	TB-650-2¾	CDI-9101	4	7.80
6491022	2¾ x 2¾	TB-651-2¾ x 2¾	CDI-9102	4	12.00
6491901	2¾ x 2¾	TB-651-2¾ x 2¾	CDI-9103	4	13.00
6491910	2¾ x 1.900 (1½)	TB-651-2¾ x 1½	CDI-9104	4	12.40
6491928	2¾ x 1.660 (1¼)	TB-651-2¾ x 1¼	CDI-9105	4	14.00
6491855	2¾ x 1.315 (1)	TB-651-2¾ x 1	CDI-9106	4	16.00

*Full circle inserts for Cavins type C slip (2¼-in. body)

6490700	2¼ x 2¼	TC-650-2¼	CDI-9030	4	6.80
6490743	2¼ x 1.900 (1½)	TC-651-2¼ x 1½	CDI-9031	4	7.80
6490735	2¼ x 1.660 (1¼)	TC-651-2¼ x 1¼	CDI-9032	4	9.00
6490727	2¼ x 1.315 (1)	TC-651-2¼ x 1	CDI-9033	4	9.90



Chevron insert | 6490107

Replacement parts for Cavins tools - slip inserts and parts

*Full circle inserts for Cavins type C and CHD slips (3½-in. body)

6490018	3½ x 3½	TC-650-3½	CDI-9001	4	9.20
6490026	3½ x 2¾	TC-651-3½ x 2¾	CDI-9002	4	14.40
6490034	3½ x 2¾	TC-651-3½ x 2¾	CDI-9003	4	18.00
6490042	3½ x 2¼	N/A	CDI-9004	4	20.00
6490077	3½ x 3¼	N/A	CDI-9007	4	11.00
649001CR	3½ x 3½ CR	N/A	CDI-9001CR	4	9.20
6490028	3½ x 2¾ CR	N/A	CDI-9002CR	4	14.40
6490038	3½ x 2¾ CR	N/A	CDI-9003CR	4	18.00
6490794	3½ x 3½ ST	N/A	CDI-9001ST	4	9.20
6490778	3½ x 2¾ ST	N/A	CDI-9002ST	4	14.40
6490751	3½ x 2¾ ST	N/A	CDI-9003ST	4	18.00
6490095T	3½ x 1.9 ST	N/A	CDI-90095T	4	22.00

*Full circle inserts for Cavins type C slip (4½-in. body)

6490409	4½ x 4½	TC-650-4½	CDI-9040	4	12.00
6490417	4½ x 4	TC-651-4½ x 4	CDI-9041	4	17.00
6490425	4½ x 3½	TC-651-4½ x 3½	CDI-9042	4	21.50
6490719	4½ x 4½ST	N/A	CDI-9040ST	4	12.00
6490419	4½ x 4ST	N/A	CDI-9041ST	4	17.00
6490433	4½ x 3½ST	N/A	CDI-9042ST	4	21.50

Parts for Cavins type B & C slips

NOV part number	Description	CDI reference number	Number per set	Weight per set (lb)
6971946	Insert retainer pin	CDI-9150	4	0.25

*All full circle inserts also available in fine tooth pattern.

Full circle inserts for Cavins type F (3½-in. body)

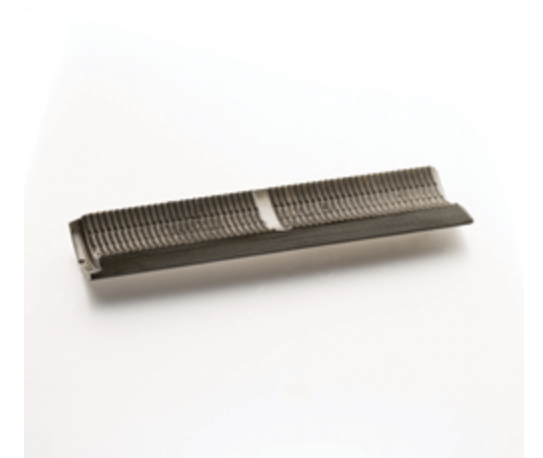
NOV part number	Size in inches/description	OEM reference number	CDI reference number	Number per set	Weight per set (lb)
6492019	3½ x 3½	TF-650-3½	CDI-9201	4	30.00
6492029	3½ x 2¾	TF-651-3½ x 2¾	CDI-9202	4	35.00
6492037	3½ x 2¾	TF-651-3½ x 2¾	CDI-9203	4	40.00
6491936	3½ x 3½ST	N/A	CDI-9201ST	4	30.00
6491944	3½ x 2¾ST	N/A	CDI-9202ST	4	35.00
6491952	3½ x 2¾ST	N/A	CDI-9203ST	4	40.00

*Full circle inserts for Cavins type F (5½-in. body)

6492118	5½ x 5½	TF-650-5½	CDI-9211	4	40.00
6492126	5½ x 5	TF-651-5½ x 5	CDI-9212	4	51.00
6492134	5½ x 4½	TF-651-5½ x 4½	CDI-9213	4	64.00
6492142	5½ x 4	TF-651-5½ x 4	CDI-9214	4	71.00
6492614	5½ x 5½ST	N/A	CDI-9211ST	4	
6492622	5½ x 5ST	N/A	CDI-9212ST	4	
6491995	5½ x 4½ST	N/A	CDI-9213ST	4	64.00
6492649	5½ x 4ST	N/A	CDI-9214ST	4	

*Full circle inserts for Cavins type F (7½-in. body)

6492215	7½ x 7½	TF-650-7½	CDI-9221	4	53.00
6492223	7½ x 7	TF-651-7½ x 7	CDI-9222	4	70.50
6492231	7½ x 6¾	TF-651-7½ x 6¾	CDI-9223	4	82.00
6492746	7½ x 7ST	N/A	CDI-9222ST	4	70.50
6492232	7½ x 6¾ST	N/A	CDI-9223ST	4	
6492251	7½ x 6½ST	N/A	CDI-9225ST	4	



Straight tooth for Cavins type F | 6491936



CR tooth pattern | 6490028



Directional regular tooth for Cavins type F | 6492019

MISSION

Replacement parts for OCM tools - slip inserts and parts

Straight tooth insert for OCM type "E" slip (3½-in. body)

NOV part number	Size in inches/description	CDI reference number	OEM reference number	Number per set	Weight per set (lb)
CDI-9301ST	3½ x 3½ST	CDI-9301ST	66651-3	4	10.50
CDI-9302ST	3½ x 2¾ST	CDI-9302ST	66651-2	4	16.46
CDI-9303ST	3½ x 2¾ST	CDI-9303ST	66651-1	4	20.57

Straight tooth insert for OCM type "E" slip (5½-in. body)

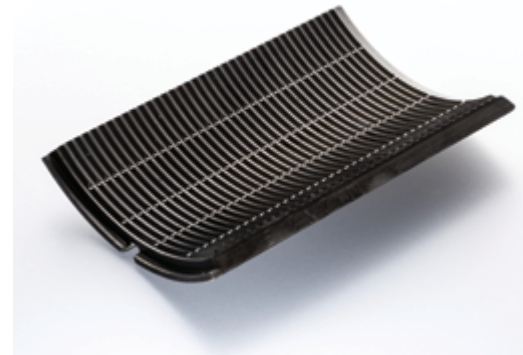
NOV part number	Size in inches/description	CDI reference number	OEM reference number	Number per set	Weight per set (lb)
6493103	5½ x 5½ST	CDI-9310ST	66653-4	4	21.69
6493111	5½ x 5ST	CDI-9311ST	66653-3	4	32.53
6493123	5½ x 4½ST	CDI-9312ST	66653-2	4	43.37
6493137	5½ x 4ST	CDI-9313ST	66653-1	4	54.21

Straight tooth insert for OCM type "E" slip (7-in. body)

NOV part number	Size in inches/description	CDI reference number	OEM reference number	Number per set	Weight per set (lb)
6493201	7 x 7	CDI-9320ST	66654-3	4	20.96
6493251	7 x 6	CDI-9325ST		4	41.93
6493271	7 x 6¾	CDI-9327ST	66654-2	4	28.85
6493283	7 x 5¾	CDI-9328ST	66654-6	4	44.57
6493291	7 x 5½	CDI-9329ST	66654-1	4	52.41



CDI-9301ST



6493201



Eckel, Contour, Bilco, Farr, Foster, and Guiberson Inserts and dies

Wraparound dies to fit Eckel and Farr 5½-in. tongs

NOV part number	Size in inches/description	CDI reference number	Number per set	Weight per die (lb)
6410839	2¾ x 3½ Die	CDI-1083	2	2.00
6410812	2¾ x 2¾ Wraparound die	CDI-1081	2	2.50
6410820	2¾ x 2¾ Wraparound die	CDI-1082	2	2.90
6904580	Bushing and screw for 2¾ ed jaw	CDI-2950	4	0.06
6410910	5½ x 5½ Wraparound die	CDI-1091	2	2.20
6410952	5½ x 5 Wraparound die	CDI-1095	2	3.40
6410928	5½ x 4½ Wraparound die	CDI-1092	2	4.00
6410936	5½ x 4 Wraparound die	CDI-1093	2	4.40
6410944	Bushing and screw for 5½ converted jaw	CDI-1094	4	0.20
6410960	7 x 7 Wraparound die	CDI-1096	2	3.07
6410979	7¾ x 7¾ Wraparound die	CDI-1097	2	3.00

Contour - dies

Contour dies for Eckel power tongs (Length of die 37/8-in.)

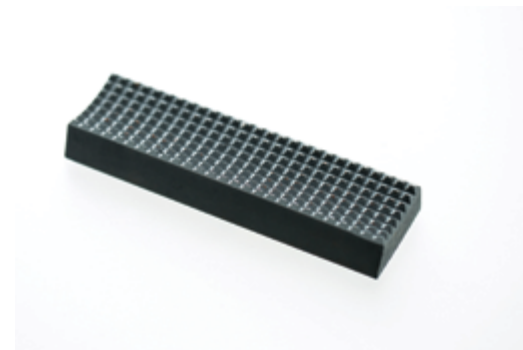
NOV part number	Size in inches/description	OEM reference number	CDI reference number	Number per set	Weight per die (lb)
6410081	2 3/8 regular contour	101245	CDI-1008	4	0.63
6410090	2 3/8 regular contour	101247	CDI-1009	4	0.63
6410103	3 1/2 regular contour	101249	CDI-1010	4	0.63
6410111	4 to 5 1/2 regular contour	N/A	CDI-1011	4	0.63
6410120	6% to 7% regular contour	N/A	CDI-1012	4	0.63
6410138	8% to 9% regular contour	N/A	CDI-1013	4	0.63
6410146	10% regular contour	N/A	CDI-1014	4	0.63
6410227	2% fine tooth contour	N/A	CDI-1022	4	0.63
6410235	2% fine tooth contour	N/A	CDI-1023	4	0.63
6410243	3 1/2 fine tooth contour	N/A	CDI-1024	4	0.63
6410316	2% fine tooth pyramid contour	N/A	CDI-1031	4	0.63
6410324	2% fine tooth pyramid contour	N/A	CDI-1032	4	0.63
6410332	3 1/2 fine tooth pyramid contour	N/A	CDI-1033	4	0.63



Regular tooth pattern | 6410103

Contour dies for Eckel 4 1/2-in. power tongs (Length of die 2 1/2-in.)

NOV part number	Size in inches/description	OEM reference number	CDI reference number	Number per set	Weight per die (lb)
6411010	2 3/8 regular contour	103642	CDI-1101	4	0.40
6411029	2 3/8 regular contour	103643	CDI-1102	4	0.40
6411037	3 1/2 regular contour	103644	CDI-1103	4	0.40
6411223	2% fine tooth contour	N/A	CDI-1122	4	0.40
6411231	2% fine tooth contour	N/A	CDI-1123	4	0.40
6411240	3 1/2 fine tooth contour	N/A	CDI-1124	4	0.40
6411258	4 1/2 fine tooth contour	N/A	CDI-1125	4	0.40
6411320	2% fine tooth pyramid contour	N/A	CDI-1132	4	0.40
6411339	2% fine tooth pyramid contour	N/A	CDI-1133	4	0.40
6411347	3 1/2 fine tooth pyramid contour	N/A	CDI-1134	4	0.40
6411355	4 1/2 fine tooth pyramid contour	N/A	CDI-1135	4	0.40



Fine tooth pyramid pattern | 6410316

Reducing Contour dies for Eckel 4 1/2-in. power tongs (2 3/8-in. jaw)

NOV part number	Size in inches/description	OEM reference number	CDI reference number	Number per set	Weight per die (lb)
6411517	2 3/8 x 2	N/A	CDI-1151	4	0.50
6411525	2 3/8 x 1 1/2 (1.90)	N/A	CDI-1152	4	0.56
6411533	2 3/8 x 1 1/4 (1.66)	N/A	CDI-1153	4	0.63
6411541	2 3/8 x 1 (1.315)	N/A	CDI-1154	4	0.72

Replacement parts for Bilco - inserts

**Inserts for Bilco dual tools (2 7/8-in. body)

NOV part number	Size in inches/description	CDI reference number	#/Slip Assembly*	Weight per die (lb)
6465013	2 7/8 x 2 7/8	CDI-6501	9	1.00
6465021	2 7/8 x 2 3/8	CDI-6502	9	1.40
6465030	2 7/8 x 2 1/8	CDI-6503	9	1.60
6465048	2 7/8 x 1 1/2 (1.90)	CDI-6504	9	1.75
6465056	2 7/8 x 1 1/4 (1.66)	CDI-6505	9	1.87
6465064	2 7/8 x 1 (1.315)	CDI-6506	9	2.00



Insert Bilco | 6466010

**Inserts for Bilco dual tools (3 1/2-in. body)

NOV part number	Size in inches/description	CDI reference number	#/Slip Assembly*	Weight per die (lb)
6466010	3 1/2 x 3 1/2	CDI-6601	9	1.05
6466028	3 1/2 x 2 7/8	CDI-6602	9	1.25
6466036	3 1/2 x 2 3/8	CDI-6603	9	1.50



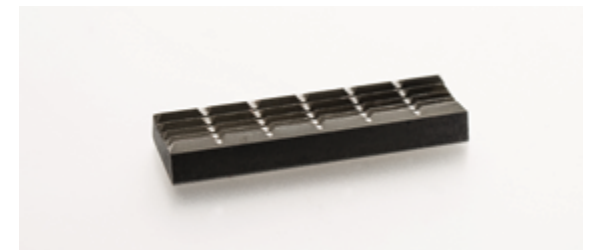
Insert Bilco | 6465013

*Gemoco is a trademark of Weatherford/Lamb, Inc. NOV is not affiliated with Weatherford/Lamb, Inc. or its affiliates and Weatherford/Lamb, Inc. does not endorse any NOV products.

Replacement parts for Farr - dies

Contour dies for Farr power tongs (Length of die 3 7/8-in.)

NOV part number	Size in inches/description	CDI reference number	Number per set	Weight per die (lb)
6410081	2 3/8 regular contour	CDI-1008	4	0.63
6410090	2 3/8 regular contour	CDI-1009	4	0.63
6410103	3 1/2 regular contour	CDI-1010	4	0.63
6410111	4 to 5 1/2 regular contour	CDI-1011	4	0.63
6410120	6% to 7% regular contour	CDI-1012	4	0.63
6410138	8% to 9% regular contour	CDI-1013	4	0.63
6410146	10% regular contour	CDI-1014	4	0.63
6410227	2% fine tooth contour	CDI-1022	4	0.63
6410235	2% fine tooth contour	CDI-1023	4	0.63
6410243	3 1/2 fine tooth contour	CDI-1024	4	0.63
6410316	2% fine tooth pyramid contour	CDI-1031	4	0.63
6410324	2% fine tooth pyramid contour	CDI-1032	4	0.63
6410332	3 1/2 fine tooth pyramid contour	CDI-1033	4	0.63



Coarse tooth | 6410090

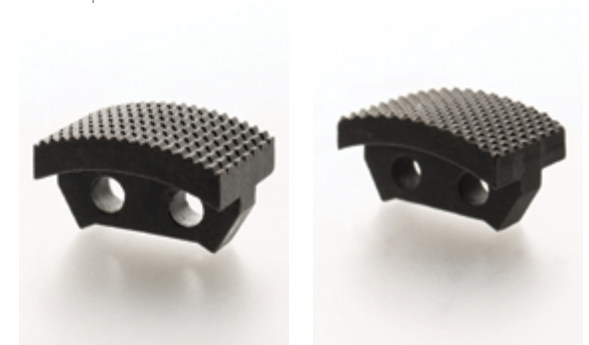


Fine tooth | 6410235

Replacement parts for Foster - dies and parts

Dies and parts for Foster #58 tongs

NOV part number	Size in inches/description	OEM reference number	Number per set	Weight per die (lb)
SDIF958	Model #58 Die	50-48-1	10	0.53
SDIF958HD	Model #58 Diamond die		10	0.53
CDI-8002	Model #58 Insert screw	50-49-2	20	0.06
6480993	Model #58 Screw and nut	N/A	10	0.10
WTM-627-300-3058	Model #58 Drag spring	50-57	5	0.06
WTM-627-300-4058	Model #58 Nylon drag plug	50-58	5	0.06
WTM-627-300-5058	Model #58 Set screw	11-147	5	0.16
SDIF304	Model #58 Flip flop die	58-304	5	2.25
SDIF303	Model #58 Flip flop jaw	58-303	5	4.63
6480110	Model #58 Flip flop screw	11-683	5	0.16
SDIF50J	Model #58 2 3/8 to 2 1/2 Jaw	50-22-7	5	4.88
6480152	Model #58 Jaw pin	50-8-2	5	1.38
SDIF147	Model #58 Backup jaw	147-7	5	4.50
6480160	Model #58 Backup pin	147-6	5	0.50
6480187	Backup Jaw 5 1/2 to 6 1/4	147-8	5	1.56



Straight tooth | SDIF958

Diamond tooth | SDIF958HD

Dies and parts for other Foster tongs

NOV part number	Size in inches/description	OEM reference number	Number per set	Weight per die (lb)
SDIF948	Model #79 2 3/8 to 2 1/2 Die	79-48-1	5	1.94
SDIF974	Model #74 2 3/8 to 2 1/2 Die	74-75	10	0.55
WTM-627-400-2074	Model #74 Insert screw	54-49	20	0.06
WTM-627-400-4074	Model #74 Drag plug	59-64	5	0.06
WTM-627-400-3074	Model #74 Drag spring	50-57-1	5	0.06



Drag spring | WTM-627-400-3074

Drag plug | WTM-627-300-3058

Replacement parts for Guiberson - inserts

Inserts for Guiberson F1-H1 bowl and slip

NOV part number	Size in inches/description	OEM reference number	CDI reference number	Weight per die (lb)
6495109	3 1/2 x 3 1/2	42588	CDI-9510	0.38
6495010	2 7/8 x 2 7/8	42587	CDI-9501	0.38
6495028	2 7/8 x 2 3/8	42586	CDI-9502	0.47

Dies and parts for Guiberson inserts T110

NOV part number	Size in inches/description	OEM reference number	CDI reference number	Weight per die (lb)
6496016	3 1/2 x 3 1/2	80842	CDI-9601	2.06
6496024	3 1/2 x 2 7/8	80841	CDI-9602	3.13
6496032	3 1/2 x 2 3/8	80840	CDI-9603	3.75



Guiberson inserts (side) | 6495109



Hillman-Kelly, Hydra Rig,
Kelco/CDI, MISSION, Peck, and Ortco
Inserts, dies, and parts

Hillman-Kelly - dies and jaw die combinations

Jaw die combinations for Hillman-Kelly 500-C tubing tongs

NOV part number	Size in inches/description	OEM reference number	CDI reference number	Number per set	Weight per die (lb)
6445012	3½ Jaw die	8502-5077	CDI-4501	2	0.44
6445020	2½ Jaw die	8502-5241	CDI-4502	2	0.82
6445039	2½ Jaw die	N/A	CDI-4503	2	1.44
6445047	2½ Jaw die	N/A	CDI-4504	2	2.00
6445055	1½ Jaw die (1.90)	N/A	CDI-4505	2	2.13
6445063	1¼ Jaw die (1.66)	N/A	CDI-4506	2	2.63
6445071	1 Jaw die (1.315)	N/A	CDI-5407	2	2.41

Special jaw die combinations for Hillman-Kelly 500-C tubing tongs

NOV part number	Size in inches/description	CDI reference number	Number per set	Weight per die (lb)
6445144	3½ Jaw Die (Fine tooth pyramid)		2	0.44
6445128	2½ Jaw Die (Fine tooth pyramid)	CDI-4512	2	0.82
6445136	2½ Jaw Die (Fine tooth pyramid)	CDI-4513	2	1.44

Standard and reducing dies for Hillman-Kelly power tongs

NOV part number	Size in inches/description	Reduction in inches	CDI reference number	Reference	Weight per die (lb)
6440010	¾ x ¾ x 4½	Standard	CDI-4001	8500-5565	0.25
6440029	¾ x ¾ x 4½	½ (Undersized)	CDI-4002	8500-5578	0.38
6440061	17/32 x ¾ x 4½	¾ Reduction	CDI-4003	8500-5570	0.34
6440045	¾ x ¾ x 4½	½ Reduction	CDI-4004	8500-5580	0.38
6440053	11/16 x ¾ x 4½	¾ Reduction	CDI-4005	8500-5568	0.42

Wraparound dies for Hillman-Kelly power tongs

NOV part number	Size in inches/description	OEM reference number	CDI reference number	Number per set	Weight per die (lb)
6440118	HKWA 3½ regular tooth	N/A	CDI-4011	6	0.70
6440126	HKWA 2½ regular tooth	N/A	CDI-4012	6	0.70
6440134	HKWA 2¾ regular tooth	N/A	CDI-4013	6	0.70
6440215	3½ fine tooth	8500-5563	CDI-4021	6	0.70
6440223	2½ fine tooth	8500-5561	CDI-4022	6	0.70
6440231	2¾ fine tooth	8500-5551	CDI-4023	6	0.70
6440240	2½ fine tooth	N/A	CDI-4024	6	0.70



Standard tooth | 6445012



Pyramid tooth | 6445144



Wraparound die | 6440118



Pencil die | 6440010

Hydra Rig bowls and slips - inserts

Inserts for Hydra Rig 150 bowl and slip

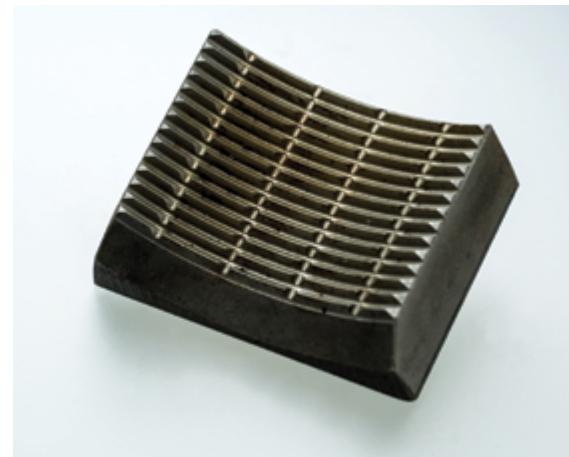
NOV part number	Size in inches/description	Reference number	Number per set	Weight per insert (lb)
6460097	2 7/8 x 3 1/2	CDI-6009	8	1.38
6460011	2 7/8 x 2 3/4	CDI-6001	8	1.90
6460020	2 7/8 x 2 3/8	CDI-6002	8	2.30
6460038	2 7/8 x 2 1/16	CDI-6003	8	2.45
6460046	2 7/8 x 1 1/2 (1.90)	CDI-6004	8	2.60
6460054	2 7/8 x 1 1/4 (1.66)	CDI-6005	8	2.75
6460062	2 7/8 x 1 (1.315)	CDI-6006	8	2.90
6460070	2 7/8 x 3/4 (1.05)	CDI-6007	8	3.00



HR150 insert | 6460097

Inserts for Hydra Rig 225 bowl and slip

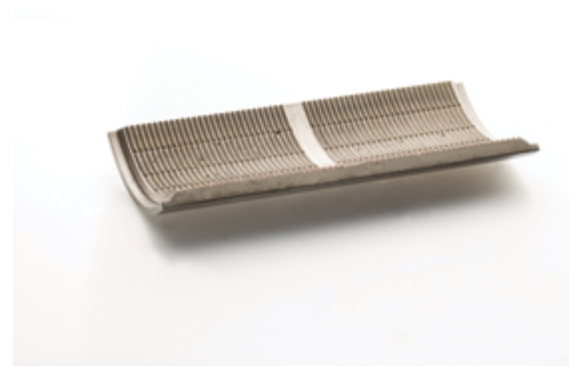
NOV part number	Size in inches/description	Reference number	Number per set	Weight per insert (lb)
6461514+80	5 1/2 x 5 1/2	CDI-6151	12	4.75
6461530+80	5 1/2 x 4 1/2	CDI-6153	12	5.00
6461549	5 1/2 x 4	CDI-6154	12	5.25
6461557+80	5 1/2 x 3 1/2	CDI-6155	12	5.50
6461565	5 1/2 x 2 7/8	CDI-6156	12	5.75
6461573	5 1/2 x 2 3/4	CDI-6157	12	6.00



HR225 insert | 6461514+80

Inserts for Hydra Rig 300 bowl and slip

NOV part number	Size in inches/description	Reference number	Number per set	Weight per insert (lb)
6461719	7 7/8 x 7 7/8	CDI-6171	4	11
6461727+80	7 7/8 x 7	CDI-6172	4	17
6461743	7 7/8 x 6 7/8	CDI-6174	4	19
6461751	7 7/8 x 6	CDI-6175	4	24
6461760	7 7/8 x 5 1/2	CDI-6176	4	27
6461778	7 7/8 x 5 3/8	CDI-6177	4	30
6461786	7 7/8 x 4 1/2	CDI-6178	4	33
6461794	7 7/8 x 4	CDI-6179	4	34
6461808	7 7/8 x 5	CDI-6180	4	30
6461816	7 7/8 x 2 7/8	CDI-6181	4	40
6461824	7 7/8 x 3 1/2	CDI-6182	4	37
6461832	7 7/8 x 2 3/8	CDI-6183	4	43
CDI-6166	7 7/8 x 6 1/4	CDI-6166	4	20
CDI-6169	7 7/8 x 6 1/2	CDI-6169	4	20
CDI-6170	7 7/8 x 4 3/4	CDI-6170	4	32



HR300 insert | 6461719

Kelco/CDI tubing tongs - dies and parts

Dies for Kelco K-20 tubing tongs

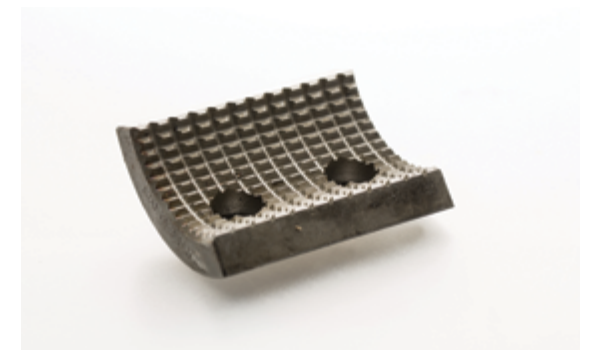
NOV part number	Size in inches/description	OEM reference number	CDI reference number	Number per set	Weight per die (lb)
6420010	K-20 - 3/4 (1.050)	514001	CDI-2001	3	1.13
6420028	K-20 - 1 (1.315)	514003	CDI-2002	3	1.07
6420036	K-20 - 1 1/4 (1.66)	514006	CDI-2003	3	0.94
6420044	K-20 - 1 1/2 (1.90)	514009	CDI-2004	3	0.75
6420052	K-20 - 2 1/16	514010	CDI-2005	3	0.63
6420060	K-20 - 2 3/8	514013	CDI-2006	3	0.41



K-20 die | 6420044

Dies for CDI or Kelco K-25 tubing tongs

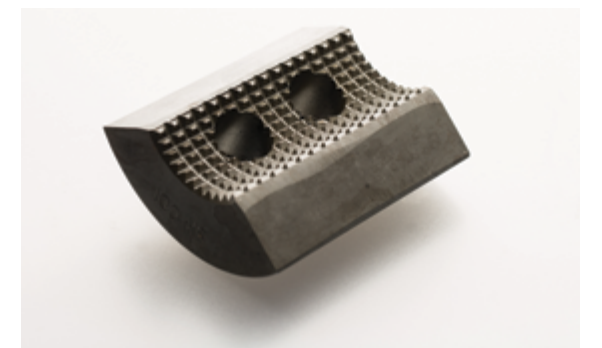
NOV part number	Size in inches/description	OEM reference number	CDI reference number	Number per set	Weight per die (lb)
6425011	K-25 - 1 (1.315)	514101	CDI-2501	3	1.63
6425020	K-25 - 1 1/4 (1.66)	514102	CDI-2502	3	1.50
6425038	K-25 - 1 1/2 (1.90)	514103	CDI-2503	3	1.32
6425046	K-25 - 2 1/16	514104	CDI-2504	3	1.30
6425054	K-25 - 2 3/8	514106	CDI-2505	3	0.95
6425097	K-25 - 2 1/2	N/A	CDI-2509	3	1.25
6425070	K-25 - 2.6970	N/A	CDI-2507	3	0.63
6425089	K-25 - 2.776	N/A	CDI-2508	3	0.55
6425062	K-25 - 2 7/8	514109	CDI-2506	3	0.50



K-25 die | 6425054

Dies for CDI or Kelco K-30 tubing tongs

NOV part number	Size in inches/description	OEM reference number	CDI reference number	Number per set	Weight per die (lb)
6429017	K-30 - 2 1/16	8527-5081-01	CDI-2901	3	4.10
6429025	K-30 - 2 3/8	8527-5083-01	CDI-2902	3	3.80
6429033	K-30 - 2 7/8	8527-5086-01	CDI-2903	3	3.10
6429041	K-30 - 3 1/2	8527-5090-01	CDI-2904	3	2.10
6429181	K-30 - 3.063	8527-5087-01	CDI-2918	3	2.80
6429114	K-30 - 3.125	N/A	CDI-2911	3	2.60
6429122	K-30 - 3.197	N/A	CDI-2912	3	2.50
6429130	K-30 - 3.250	N/A	CDI-2913	3	2.40
6429190	K-30 - 3.327	8527-5089-01	CDI-2919	3	2.30
6429149	K-30 - 3.375	N/A	CDI-2914	3	2.25
6429203	K-30 - 3.668	8527-5091-01	CDI-2920	3	1.70
6429157	K-30 - 3.682	N/A	CDI-2915	3	1.60
6429211	K-30 - 3 3/4	8527-5092-01	CDI-2921	3	1.50
6429165	K-30 - 3.862	N/A	CDI-2916	3	1.13
6429173	K-30 - 4.035	N/A	CDI-2917	3	0.75
6429246	K-30 - 3.625 long tooth	N/A	CDI-2924	3	1.70
6429270	K-30 - 3.875 long tooth	N/A	CDI-2927	3	3.15



K-30 die | 6429017

*Note: other sizes available.

Bushing and screws for Kelco tubing tongs

NOV part number	Description	OEM reference number	Number per set	Weight per (lb)
CDI-2550	K-20 or K-25 bushing	0506781	6	0.03
CDI-2554	K-20 or K-25 new style bushing	N/A	6	0.03
CDI-2950	K-30 bushing and screw	0506852	6	0.06

Inserts for MISSION deepwell bowl and slip

NOV part number	Size in inches/description	CDI reference number	Number per set	Weight per die (lb)
6460097	2 7/8 x 3 1/2	CDI-6009	8	1.60
6460011	2 7/8 x 2 3/4	CDI-6001	8	1.90
6460020	2 7/8 x 2 3/8	CDI-6002	8	2.30
6460038	2 7/8 x 2 1/16	CDI-6003	8	2.45
6460046	2 7/8 x 1 1/2 (1.90)	CDI-6004	8	2.60
6460054	2 7/8 x 1 1/4 (1.66)	CDI-6005	8	2.75
6460062	2 7/8 x 1 (1.315)	CDI-6006	8	2.90
6460070	2 7/8 x 3/4 (1.050)	CDI-6007	8	3.00



Bushing | CDI 2550



Standard tooth | 6460011

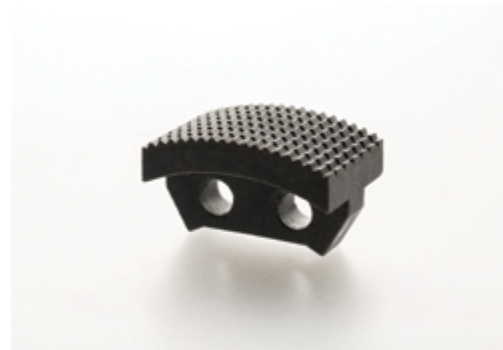
Inserts for MISSION lightweight bowl and slip

NOV part number	Size in inches/description	CDI reference number	Number per set	Weight per insert (lb)
6460216	2 $\frac{7}{8}$ x 2 $\frac{7}{8}$	CDI-6021	4	2.25
6460224	2 $\frac{7}{8}$ x 2 $\frac{3}{4}$	CDI-6022	4	2.63
6460232	2 $\frac{7}{8}$ x 3 $\frac{1}{2}$	CDI-6023	4	2.10

*CDI solid inserts for MISSION 3 $\frac{1}{2}$ -in. slim hole slips

NOV part number	Size in inches/description	CDI reference number	Number per set	Weight per insert (lb)
6460402	3 $\frac{1}{2}$ x 3 $\frac{1}{2}$	CDI-6040	8	2.75
6460410	3 $\frac{1}{2}$ x 2 $\frac{7}{8}$	CDI-6041	8	2.50
6460429	3 $\frac{1}{2}$ x 2 $\frac{3}{4}$	CDI-6042	8	2.00

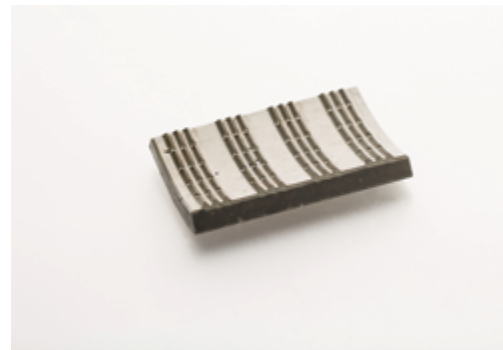
*These inserts take the place of rolling dogs. Back plates are not required.



Standard tooth | SDIF958

Inserts and parts for Peck #63 tongs

NOV part number	Size in inches/description	OEM reference number	CDI reference number	Number per set	Weight per insert (lb)
SDIF958	Model #63 Insert	63-3	CDI-8001	10	0.53
CDI-8002	Model #63 Insert screw	63-4	CDI-8002	20	0.06
WTM-627-300-3058	Model #63 Drag spring	63-9	CDI-8003	5	0.06
WTM-627-300-4058	Model #63 Nylon drag plug	63-10	CDI-8004	5	0.02
WTM-627-300-5058	Model #63 Set screw	63-8	CDI-8005	5	0.16
6480080	Model #63 2 $\frac{3}{4}$ to 2 $\frac{1}{2}$ Jaw	63-5	CDI-8008	5	4.88



7-in. Ortco | 6436013

Inserts for Ortco 7-in. bowl and slip

NOV part number	Size in inches/description	CDI reference number	Number per set	Weight per insert (lb)
6436013	7 x 7	CDI-3601	18	1.30
6436021	7 x 6 $\frac{5}{8}$	CDI-3602	18	1.75
6436048	7 x 5 $\frac{1}{2}$	CDI-3604	18	3.13

Inserts for Ortco 5 $\frac{1}{2}$ -in. bowl and slip

NOV part number	Size in inches/description	CDI reference number	Number per set	Weight per insert (lb)
6435017	5 $\frac{1}{2}$ x 5 $\frac{1}{2}$	CDI-3501	12	1.00
6435025	5 $\frac{1}{2}$ x 5	CDI-3502	12	1.50
6435203	5 $\frac{1}{2}$ x 4 $\frac{3}{4}$	CDI-3503	12	1.75
6435041	5 $\frac{1}{2}$ x 4 $\frac{1}{2}$	CDI-3504	12	2.00
6435050	5 $\frac{1}{2}$ x 4 $\frac{1}{4}$	CDI-3505	12	2.13
6435238	5 $\frac{1}{2}$ x 4	CDI-3506	12	2.38
6435076	5 $\frac{1}{2}$ x 3 $\frac{1}{2}$	CDI-3507	12	2.87
6435254	5 $\frac{1}{2}$ x 2 $\frac{7}{8}$	CDI-3508	12	3.13

* Note: Other sizes are available.

Inserts for Ortco 4 $\frac{1}{4}$ -in. bowl and slip

NOV part number	Size in inches/description	CDI reference number	Number per set	Weight per insert (lb)
6434118	4 $\frac{1}{2}$ x 4 $\frac{3}{4}$	CDI-3411	12	0.70
6434061	4 $\frac{1}{2}$ x 4 $\frac{1}{2}$	CDI-3406	12	0.75
6434126	4 $\frac{1}{2}$ x 4 $\frac{1}{4}$	CDI-3412	12	1.00
6434134	4 $\frac{1}{2}$ x 4 $\frac{1}{8}$	CDI-3413	12	1.13
6434053	4 $\frac{1}{2}$ x 4	CDI-3405	12	1.25
6434045	4 $\frac{1}{2}$ x 3 $\frac{1}{2}$	CDI-3404	12	1.50
6434142	4 $\frac{1}{2}$ x 3 $\frac{1}{4}$	CDI-3414	12	1.75
6434355	4 $\frac{1}{2}$ x 3 $\frac{1}{8}$	CDI-3415	12	1.85
6434169	4 $\frac{1}{2}$ x 3	CDI-3416	12	1.94
6434037	4 $\frac{1}{2}$ x 2 $\frac{7}{8}$	CDI-3403	12	2.00
6434029	4 $\frac{1}{2}$ x 2 $\frac{3}{4}$	CDI-3402	12	2.25
6434010	4 $\frac{1}{2}$ x 2 $\frac{1}{16}$	CDI-3401	12	2.50
6434177	4 $\frac{1}{2}$ x 2	CDI-3417	12	2.55
6434371	4 $\frac{1}{2}$ x 1 $\frac{1}{2}$	CDI-3418	12	2.65

* Note: Other sizes are available.

Inserts for Ortco 2 $\frac{7}{8}$ -in. bowl and slip

NOV part number	Size in inches/description	CDI reference number	Number per set	Weight per insert (lb)
6476074	2 $\frac{7}{8}$ x 2 $\frac{7}{8}$	CDI-7607	12	0.75
6476066	2 $\frac{7}{8}$ x 2 $\frac{3}{4}$	CDI-7606	12	1.00
6476058	2 $\frac{7}{8}$ x 2 $\frac{1}{16}$	CDI-7605	12	1.13
6476040	2 $\frac{7}{8}$ x 1 $\frac{1}{2}$ (1.90)	CDI-7604	12	1.25
6476031	2 $\frac{7}{8}$ x 1 $\frac{1}{4}$ (1.66)	CDI-7603	12	1.38
6476023	2 $\frac{7}{8}$ x 1 (1.315)	CDI-7602	12	1.38
6476015	2 $\frac{7}{8}$ x $\frac{3}{4}$ (1.05)	CDI-7601	12	1.50

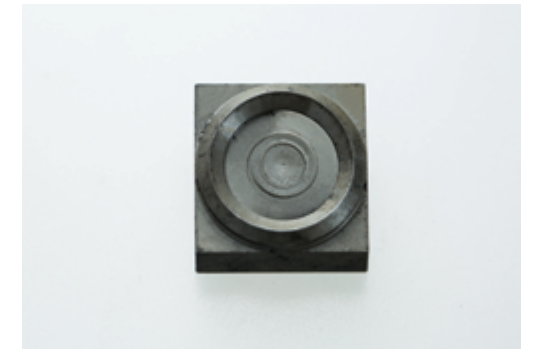


2 $\frac{7}{8}$ -in. Ortco | 6476074

Varco - Circular buttons

*Circular buttons for Varco drill collar slips

NOV p/n (button only)	OEM reference number	Reference MISSION part number	Weight per each (lb)
2513	2513	6426131	0.25
2619	2619	6426190	0.25
2620	2920	6426204	0.16
2625	2625	6426255	0.25
2626	2626	6426263	0.27
2627	2627	6426271	0.25
2628	2628	6426280	0.25
2630	2630	6426301	0.17
2631	2631	6426310	0.17



Standard small circular button | 2620

*Circular buttons for Varco drill collar slips set (DCS)

NOV p/n for set (DCS)	Size in inches/description	Reference MISSION part number	Number per set	Weight per set (lb)
2628-49	3 - 4 DSC-S	6426288	49	13
2620-49	4 - 4 $\frac{7}{8}$ DSC-S		49	8
2628-63	4 $\frac{1}{2}$ - 6 DSC-R	6426289	63	16
2620-63	5 $\frac{1}{2}$ - 7 DSC-R		63	11
2513-88	5 $\frac{1}{2}$ - 7 DSC-L		88	22
2630-88	6 $\frac{3}{4}$ - 8 $\frac{1}{4}$ DSC-L		88	15
2630-96	8 - 9 $\frac{1}{2}$ DSC-L		96	16
2627-104	8 $\frac{1}{2}$ - 10 DSC-L		104	26
2630-112	9 $\frac{1}{4}$ - 11 $\frac{1}{4}$ DSC-L		112	19
2630-136	11 - 12 $\frac{3}{4}$ DSC-L		136	13
2630-136	12 - 14 DSC-L	642630-136	136	19



Reducing medium circular button | 2619

*Circular buttons for Varco casing slip (CMS-XL)

NOV p/n (button only)	OEM reference number	Reference MISSION part number	Weight per button
2628	2628	6426280	0.25
2619	2619	6426190	0.25
2630	2630	6426301	0.17
2627	2627	6426271	0.25
2631	2631	6426310	0.17
2626	2626	6426263	0.27
13868	13868	6413668	0.29



Reducing large circular button | 2513

*Circular buttons for Varco casing slip set (CMS-XL)

NOV p/n for set (DCS)	Size in inches/description	OEM reference number	Reference MISSION part number	Number per set	Weight per set (lb)
2628-144	6 $\frac{5}{8}$ CMXL	2628-144		144	36
2619-144	7	2619-144	6426199	144	36
2630-144	7 $\frac{7}{8}$	2630-144		144	24
2630-156	8 $\frac{1}{8}$	2630-156	642630-156	156	26
2630-168	9 $\frac{1}{8}$	2630-168	6426308	168	28
2630-180	10 $\frac{3}{8}$	2630-180	642630-180	180	30
2627-204	11 $\frac{3}{4}$	2627-204		204	51
2630-216	12 $\frac{3}{4}$ and 13 $\frac{3}{8}$	2630-216	642630-216	216	36
2631-252	16	2631-252	642631-252	252	43
2626-300	18 $\frac{3}{8}$	2626-300		300	60
2631-213	20	2631-213	642631-312	312	52
NPN	22	13868-360		360	60
2631-360	24	2631-360	6426318	360	60
2631-396	26	2631-396		396	64
NPN	28	13868-432		432	68
2631-444	30	2631-444	6426319	444	70

Varco - inserts

*Circular buttons for Varco conductor pipe slip (CP-S)

NOV part number	Size in inches/description	Number per set	Weight per set (lb)
2631-156	CB Kit - 24 CP-S	156	26
2631-168	CB Kit - 26 CP-S	168	28
2631-192	CB Kit - 30 CP-S	192	32

Note: These buttons also fit DenCon or Blohm + Voss* drill collar, casing, and conductor pipe slips.

Inserts for Varco rotary slips – CDI tooth pattern

MISSION part number	Varco part number	Description	CDI reference Number	Slip size in inches	Pipe size in inches (OD)	Number of inserts required					Weight per insert (lb)
						SDS	SDML and SDM	SDXL	SDL		
6421601	2160	Reducer	CDI-2160	3½	2¾	24	30		36	0.87	
6421610	2161	Reducer	CDI-2161	3½	2¾	24	30		36	0.64	
6421628	2162	Basic	CDI-2162	3½	3½	24	30		36	0.42	
6421636	2163	Reducer	CDI-2163	4½	3½	36	45	54	54	0.81	
6421644	2164	Reducer	CDI-2164	4½	4	36	45	54	54	0.61	
6421652	2165	Basic	CDI-2165	4½	4½	36	45	54	54	0.42	
6421687	2168	Reducer	CDI-2168	5	4		45	54	54	0.81	
6421660	2166	Reducer	CDI-2166	5	4½		45	54	54	0.63	
6421679	2167	Basic	CDI-2167	5	5		45	54	54	0.42	
6421687	2168	Reducer	CDI-2168	5½	4½		45	54	54	0.81	
6421695	2169	Reducer	CDI-2169	5½	5		45	54	54	0.61	
6421709	2170	Basic	CDI-2170	5½	5½		45	54	54	0.42	
6421725	2172	Reducer	CDI-2172	7	6¾			60	60	0.61	
6421733	2173	Basic	CDI-2173	7	7			60	60	0.42	

Insert kit with CDI tooth pattern

MISSION part number	Number of regular dies	Number of bevel dies	CDI part number	Weight per set (lb)	Varco/BJ part number
642160-30	30		CDI-2160-30		2160-30
6421619	30		CDI-2161-30		2161-30
642163-36	36		CDI-2163-36		2163-36
6421633	54		CDI-2163-54		2163-54
6421658	36		CDI-2165-36		2165-36
6421659	54		CDI-2165-54	22.68	2165-54
6421666	54		CDI-2166-54		2166-54
6421673	54		CDI-2167-54	21.00	2167-54
6421688	54		CDI-2168-54		2168-54
6421693	32	16	CDI-2169-16B-32		2169-16B-32
6421697	54		CDI-2169-54		2169-54
6421698	45		CDI-2169-45		2169-45
6421702	54		CDI-2170-54		2170-54



Varco tooth pattern | 2161



Varco tooth pattern | 2161



CDI tooth pattern | 6421610



CDI tooth pattern | 6421610

Varco - inserts

Inserts for Varco casing elevator spider slip

CDI	Varco tooth pattern part #	Description	OEM reference number	Slip size inches	Pipe size (OD) inches	Number of inserts required**							Weight per insert (lb)
						200 Ton 7%	350 Ton 14	500 Ton 14	750 Ton 14	1000 Ton 24	500 Ton 24	750 Ton 24	
6421601	642160V	Reducer	2160	3½	2¾	12B/12							0.87
6421610	642161V	Reducer	2161	3½	2¾	12B/12							0.64
6421628	642162V	Basic	2162	3½	3½	24							0.42
6421636	642163V	Reducer	2163	4½	3½	16B/16							0.81
6421644	642164V	Reducer	2164	4½	4	16B/16							0.61
6421652	642165V	Basic	2165	4½	4½	32							0.42
6421687	642168V	Reducer	2168	5½	4½	16B/16	16B/24	16B/32					0.81
6421695	642169V	Reducer	2169	5½	5	16B/16	16B/24	16B/32					0.61
6421709	642170V	Basic	2170	5½	5½	32	40	48					0.42
6426328	642632V	Reducer	2632	7%	6%	24B/24	24B/36	24B/48	24B/60				0.81
6426239	642623V	Reducer	2623	7%	7	24B/24	24B/36	24B/48	24B/60				0.64
6426522	642652V	Reducer	2652	7%	7%	24B/24	24B/36	24B/48	24B/60				0.61
6426336	642633V	Basic	2633	7%	7%	48	60	72	84				0.42
6426492	642649V	Undersize	2649	7%	7¾	48	60	72	84				0.40
6426409	642640V	Reducer	2640	9%	8%		32B/48	32B/64	32B/80	24B/96			0.81
6426506	642650V	Reducer	2650	9%	8%		32B/48	32B/64	32B/80	24B/96			0.75
6426336	642633V	Basic	2633	9%	9%		80	96	112	120			0.42
6426492	642649V	Undersize	2649	9%	9%		80	96	112	120			0.40
6426492	642649V	Undersize	2649	9%	9%		80	96	112	120			0.40
6426409	642640V	Reducer	2640	11%	10%		40B/60	40B/80	40B/100	36B/144			0.81
6426379	642637V	Basic	2637	11%	11%		100	120	140	180			0.42
6426514	642651V	Undersize	2651	11%	11%		100	120	140	180			0.40
6426379	642637V	Basic	2637	13%	13%		100	120	140				0.42
6426492	642649V	Undersize	2649	13%	13½		100	120	140				0.40
N/A	642657V	Reducer	2657	14	12¾		40B/60	40B/80	40B/100	36B/144			
N/A	642656V	Reducer	2656	14	12%		40B/60	40B/80	40B/100	36B/144			
6426360	642636V	Reducer	2636	14	13a		40B/60	40B/80	40B/100	36B/144			0.64
6426522	642652V	Reducer	2652	14	13½		40B/60	40B/80	40B/100	36B/144			0.61
6426530	642653V	Reducer	2653	14	13%		40B/60	40B/80	40B/100	36B/144			0.52
6426816	642655V	Reducer	2655	14	13%		40B/60	40B/80	40B/100	36B/144			0.50
6426352	642635V	Basic	2635	14	14		100	120	140	180			0.42
6426352	642635V	Basic	2635	16	16					240	180	210	0.42
6426689	642638V	Reducer	2638	20	18%					720	420	510	0.52
6426352	642635V	Basic	2635	20	20					300	180	210	0.42
6426352	642635V	Basic	2635	24	24						180	210	0.42

Note: These inserts also fit DenCon or Blohm + Voss Rotary Slips.

**Note: "B" in the chart under "Number of Inserts Required" indicates the number of beveled reducer inserts required in that set.

VARCO/BJ tooth pattern beveled reducer inserts are also available.

*DenCon is a trademark of Den-Con Tool Company, Inc. NOV is not affiliated with Den-Con Tool Company or its affiliates and Den-Con Tool Company does not endorse any NOV products.

Contour dies for Weatherford power tongs

NOV part number	Size in inches/description	OEM reference number	CDI reference number	Number per set	Weight per die (lb)
6410510	2%	100-398	CDI-1051	6	0.56
6410529	2%	100-397	CDI-1052	6	0.56
6410537	3%	100-396	CDI-1053	6	0.56
6410545	4 to 5½	100-118	CDI-1054	7/8	0.69
6410278	4 to 5½ Fine tooth		N/A	7/8	0.69
6410553	6% to 7%	100-120	CDI-1055	7	0.72
CDI-1055FT	6% to 7% Fine tooth		N/A	7	0.72
6410561	8% to 9%	100-121	CDI-1056	7	0.72
6410286	8% to 9% Fine tooth		CDI-1056FT	7	0.72
6410570	10%	100-119	CDI-1057	7	0.56
6410588	10% Front contour	113-145	CDI-1058	--	0.47



Standard and reducing dies for Weatherford power tongs (5/16-in. die slot)

NOV part number	Size in inches/description	Reduction in inches	OEM reference number	CDI reference number	Weight per die (lb)
6440010	3/8 x 3/8 x 4 1/2	Standard	112921-001	CDI-4001	0.25
6440029	5/16 x 5/8 x 4 1/2	1/8 (Undersized)		CDI-4002	0.38
6440061	17/32 x 5/8 x 4 1/2	3/16 Reduction		CDI-4003	0.34
6440045	5/8 x 5/8 x 4 1/2	1/2 Reduction		CDI-4004	0.38
6440053	11/16 x 5/8 x 4 1/2	3/8 Reduction		CDI-4005	0.42

1-in. wide flat die | 6410731



Flat die | 6410740

Flat dies for Weatherford power tongs

NOV part number	Size in inches/description	OEM reference number	CDI reference number	Weight per die (lb)
6440010	3/8 x 3/8 x 4 1/2	112921-001	CDI-4001	0.25
6410715	3/8 x 1 x 2 1/2	103-347	CDI-1071	0.25
6410723	3/8 x 1 x 3 (70 Pyramid) For 13% to F-16-in.	109-602	CDI-1072	0.25
6410731	3/8 x 1 x 3 3/8 (70 Pyramid) Master jaw	100-122	CDI-1073	0.34
6410740	1/2 x 1 1/4 x 5 (Special pyramid)	109-349	CDI-1074	0.72
6410758	10% to 11% (70 Pyramid)	103-346	CDI-1075	0.53
6410774	3/8 x 1 x 1 1/8	115-82		0.12

Vermeer dies

NOV part number	Size in inches/description	OEM reference number	CDI reference number	Weight per die (lb)
6498481	1.55 contoured		CDI-9848	4.72
6498680	2 1/4 contoured		CDI-9868	3.25
6498701	3% contoured	230865	CDI-9870	2.83
6498710	3 1/4 contoured	230981	CDI-9871	4.00
6498728	2% contoured	230831	CDI-9872	5.90
6498744	1.66 contoured	236078	CDI-9874	3.93
6498781	2% contoured		CDI-9878	3.57
CDI-9875	2 1/2 contoured		CDI-9875	3.55



Vermeer 1.55 R | 6498481



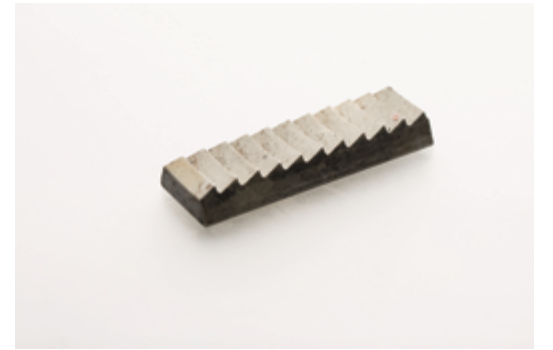
Vermeer 2% curved | 6498728

Woolley - inserts

Inserts for Woolley type A drill collar slip

NOV part number	Size in inches/description	OEM reference number	CDI reference number	Number per set	Weight per insert (lb)
6454011	3 to 4 1/4	797-000-0000	CDI-5401	12	.40

Note: Number per set- varies with size as follows: 3 1/4 to 4 1/4-in. = 24; 4 1/4 to 5 3/4-in. = 27; 5 3/4 to 7-in. = 30; 6 3/4 to 8 1/4-in. = 33; 8 1/4 to 10-in. = 36



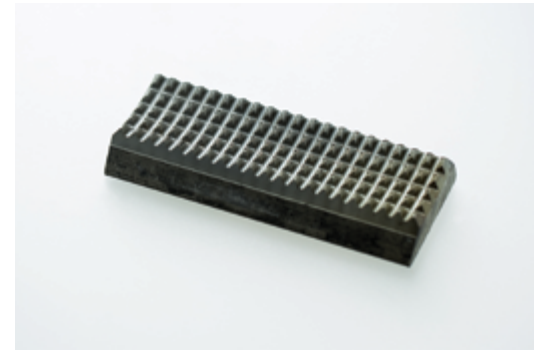
Type A standard tooth | 6454011

Inserts for Woolley 4 1/2-in. type B drill pipe slip

6450016+80	4 1/2 x 4 1/2	757-044-0144	CDI-5001	18/24	0.75
6450024	4 1/2 x 4	757-044-0140	CDI-5002	18/24	1.00
6450032	4 1/2 x 3 1/2	757-044-0134	CDI-5003	18/24	1.50
6450040	4 1/2 x 2 3/8	757-044-0127	CDI-5004	18/24	2.00
6450059	4 1/2 x 2 1/8	757-044-0123	CDI-5005	18/24	2.25
6450067	4 1/2 x 2 1/16	N/A	CDI-5006	18/24	2.50

Inserts for Woolley 5 1/2-in. type B drill pipe slip

6450105	5 1/2 - 5 1/2	757-054-0154	CDI-5010	24	1.30
6450121	5 1/2 - 5	757-054-0150	CDI-5012	24	2.00
6450113	5 1/2 - 4 1/2	757-054-0144	CDI-5011	24	2.30
6450130	5 1/2 - 4	757-054-0140	CDI-5013	24	3.00



Type B standard tooth | 6450016+80

Inserts for Woolley 4 1/2-in. X-Long rotary slip

6451209	4 1/2 x 4 1/2	757-044-0344	CDI-2120	24	1.40
6451217	4 1/2 x 4	757-044-0340	CDI-5121	24	1.80
6451225	4 1/2 x 3 1/2	757-044-0334	CDI-5122	24	2.20

Inserts for Woolley 5-in. X-Long rotary slip

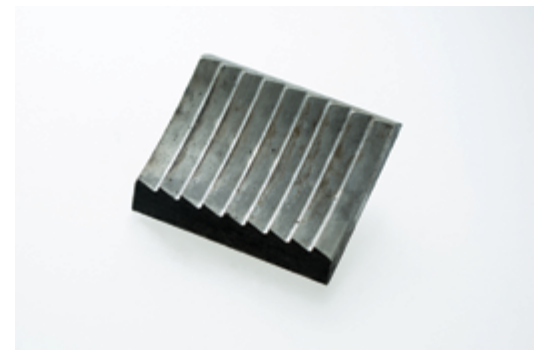
6451306	5 x 5	757-050-0350	CDI-5130	24	1.40
6451314	5 x 4 1/2	757-050-0344	CDI-5131	24	1.80
6451322	5 x 4	757-050-0340	CDI-5132	24	2.20



Woolley XL standard tooth | 6451209

Inserts for Woolley type C casing slip

6452019	8% X 8%	787-700-0585	CDI-5201	32	0.69
6452108	20 x 20	787-700-5200	CDI-5210	64	0.90
6405240	8% X 7	787-700-0570	CDI-5202	32	1.50
6405258	8% X 7%	787-700-0575	CDI-5203	32	1.30
6405266	10% X 9%	787-700-0595	CDI-5207	36	0.90
6405274	10% X 10%	787-700-5106	CDI-5206	36	0.70
6405282	13% X 11%	787-700-5116		44	1.40
6405290	13% X 13%	787-700-5113	CDI-5220	44	0.70



Woolley C insert | 6452019

RHS Rotary parts

Pipe size in inches	Rating in STon	Rating in Ton	Nominal slip size in inches	Final assembly part number	Straight inserts part number	Quantity	Top bevelled inserts part number*	Quantity	Bottom bevelled inserts part number	Quantity
7,000	750	680	7.000	10737785-001	16504796-001	147	-	-	-	-
6,875	750	680	7.000	10737785-002	16504796-002	147	-	-	-	-
6,750	750	680	7.000	10737785-003	16504796-003	105	16504796-103	21	16504796-203	21
6,625	750	680	7.000	10737785-004	16504796-004	105	16504796-104	21	16504796-204	21
6,500	750	680	7.000	10737785-005	16504796-005	105	16504796-105	21	16504796-205	21
6,375	750	680	7.000	10737785-006	16504796-006	105	16504796-106	21	16504796-206	21
6,250	750	680	7.000	10737785-007	16504796-007	105	16504796-107	21	16504796-207	21
6,125	750	680	7.000	10737785-008	16504796-008	105	16504796-108	21	16504796-208	21
6,000	750	680	7.000	10737785-009	16504796-009	105	16504796-109	21	16504796-209	21
6,000	675	613	6.000	10737789-001	16504796-001	126	-	-	-	-
5,875	675	613	6.000	10737789-002	16504796-002	126	-	-	-	-
5,750	675	613	6.000	10737789-003	16504796-003	90	16504796-103	18	16504796-203	18
5,625	675	613	6.000	10737789-004	16504796-004	90	16504796-104	18	16504796-204	18
5,500	675	613	6.000	10737789-005	16504796-005	90	16504796-105	18	16504796-205	18
5,375	675	613	6.000	10737789-006	16504796-006	90	16504796-106	18	16504796-206	18
5,250	675	613	6.000	10737789-007	16504796-007	90	16504796-107	18	16504796-207	18
5,125	675	613	6.000	10737789-008	16504796-008	90	16504796-108	18	16504796-208	18
5,000	675	613	6.000	10737789-009	16504796-009	90	16504796-109	18	16504796-209	18
5,000	500	454	5.000	10737793-001	16504796-001	105	-	-	-	-
4,875	500	454	5.000	10737793-002	16504796-002	105	-	-	-	-
4,750	500	454	5.000	10737793-003	16504796-003	75	16504796-103	15	16504796-203	15
4,625	500	454	5.000	10737793-004	16504796-004	75	16504796-104	15	16504796-204	15
4,500	500	454	5.000	10737793-005	16504796-005	75	16504796-105	15	16504796-205	15
4,375	500	454	5.000	10737793-006	16504796-006	75	16504796-106	15	16504796-206	15
4,250	500	454	5.000	10737793-007	16504796-007	75	16504796-107	15	16504796-207	15
4,125	500	454	5.000	10737793-008	16504796-008	75	16504796-108	15	16504796-208	15
4,000	500	454	5.000	10737793-009	16504796-009	75	16504796-109	15	16504796-209	15
4,000	350	317	4.000	10737794-001	16504796-001	84	-	-	-	-
3,875	350	317	4.000	10737794-002	16504796-002	84	-	-	-	-
3,750	350	317	4.000	10737794-003	16504796-003	60	16504796-103	12	16504796-203	12
3,625	350	317	4.000	10737794-004	16504796-004	60	16504796-104	12	16504796-204	12
3,500	350	317	4.000	10737794-005	16504796-005	60	16504796-105	12	16504796-205	12
3,375	350	317	4.000	10737794-006	16504796-006	60	16504796-106	12	16504796-206	12
3,250	350	317	4.000	10737794-007	16504796-007	60	16504796-107	12	16504796-207	12
3,125	350	317	4.000	10737794-008	16504796-008	60	16504796-108	12	16504796-208	12
3,000	350	317	4.000	10737794-009	16504796-009	60	16504796-109	12	16504796-209	12
3,000	240	218	3.000	16647550-001	16504796-001	63	-	-	-	-
2,875	240	218	3.000	16647550-002	16504796-002	63	-	-	-	-
2,750	240	218	3.000	16647550-003	16504796-003	45	16504796-103	9	16504796-203	9
2,625	240	218	3.000	16647550-004	16504796-004	45	16504796-104	9	16504796-204	9
2,500	240	218	3.000	16647550-005	16504796-005	45	16504796-105	9	16504796-205	9
2,375	240	218	3.000	16647550-006	16504796-006	45	16504796-106	9	16504796-206	9
2,250	240	218	3.000	16647550-007	16504796-007	45	16504796-107	9	16504796-207	9
2,125	240	218	3.000	16647550-008	16504796-008	45	16504796-108	9	16504796-208	9
2,000	240	218	3.000	16647550-009	16504796-009	45	16504796-109	9	16504796-209	9

*Note: The RHS insert teeth shape is of the BJ type. When installing ensure the teeth are pointing upward in the opposite direction of the string weight. Varco inserts have a teeth shape which is symmetrical. When installing only the bevelled type shall be installed with the bevel directing outward.



Straight insert | 16504796-001



Top bevel insert | 16504796-104



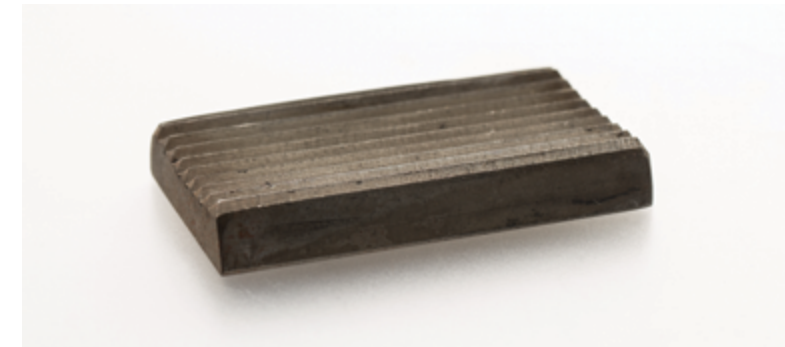
Bottom bevel insert | 16504796-204

Other dies

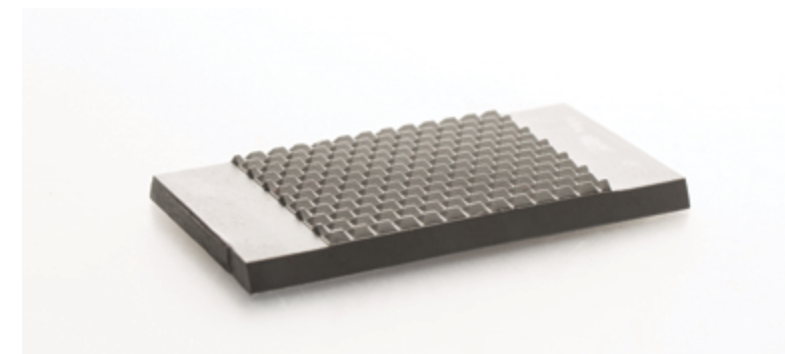
NOV part number	Description	OEM reference number	CDI reference number	Weight per die (lb)
30160385	Lower ST-80 die only			2.50
30160380-500	Upper ST-80 die only			3.085
6416985	Tork chief die	10B486CD	CDI-1698	4.00
6498469	Hawk JAW S-7STL die	97C018005	CDI-9846	1.50
AC01-01-03	Wide die (WD4)			2.10
81788+30	Wrench torque TW100 die		81788	2.75

Other inserts

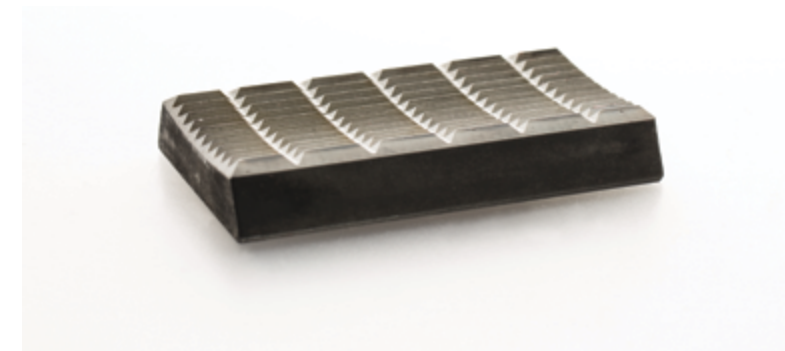
NOV part number	Description	CDI reference number	Number per set	Weight per die (lb)
6433332	Insert for safety clamp type C with cotter	CDI-3333	10	1.12
6432336	Insert for safety clamp type T with cotter	CDI-3223	10	0.25



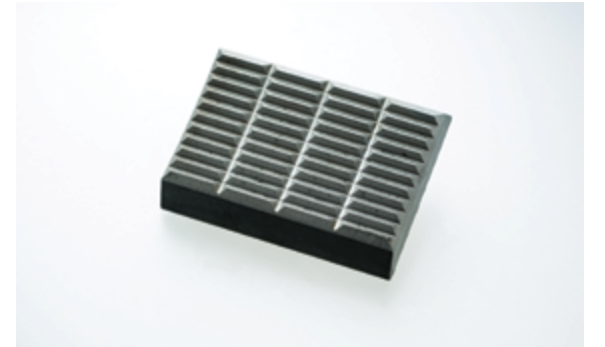
6498469



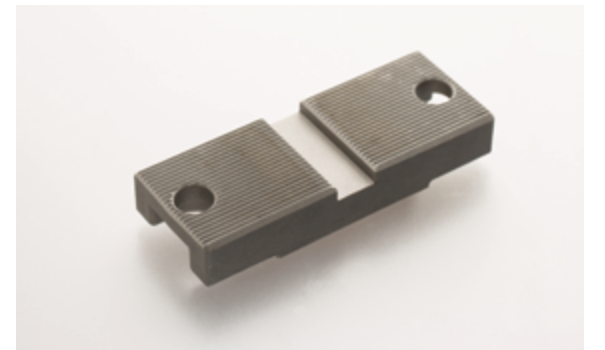
AC01-01-03



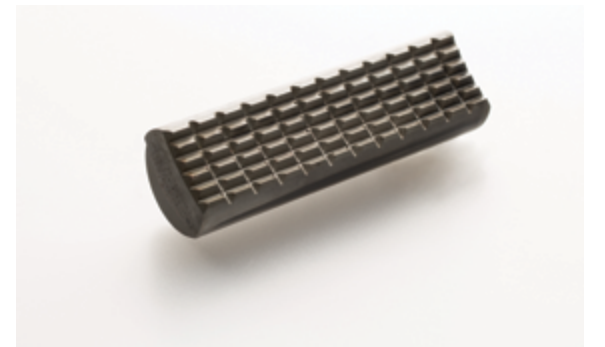
81788+30



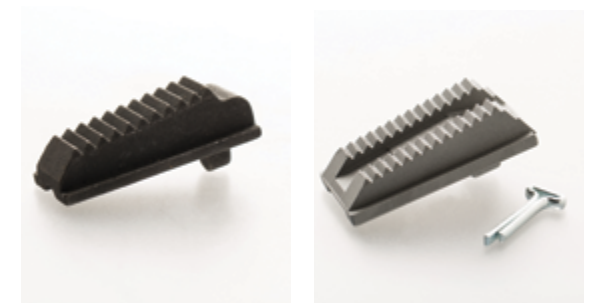
30160382



30160380-500



6416985



6432336

6433332

National Oilwell Varco has produced this brochure for general information only, and it is not intended for design purposes. Although every effort has been made to maintain the accuracy and reliability of its contents, National Oilwell Varco in no way assumes responsibility for liability for any loss, damage or injury resulting from the use of information and data herein. All applications for the material described are at the user's risk and are the user's responsibility.

©2019 National Oilwell Varco. All rights reserved.
RigDoc 052919 | JIRA 7507

Corporate Headquarters
7909 Parkwood Circle Drive
Houston, Texas 77036
USA

Rig Technologies Headquarters
10353 Richmond Avenue
Houston, Texas 77042
USA



mission@nov.com

nov.com/mission